

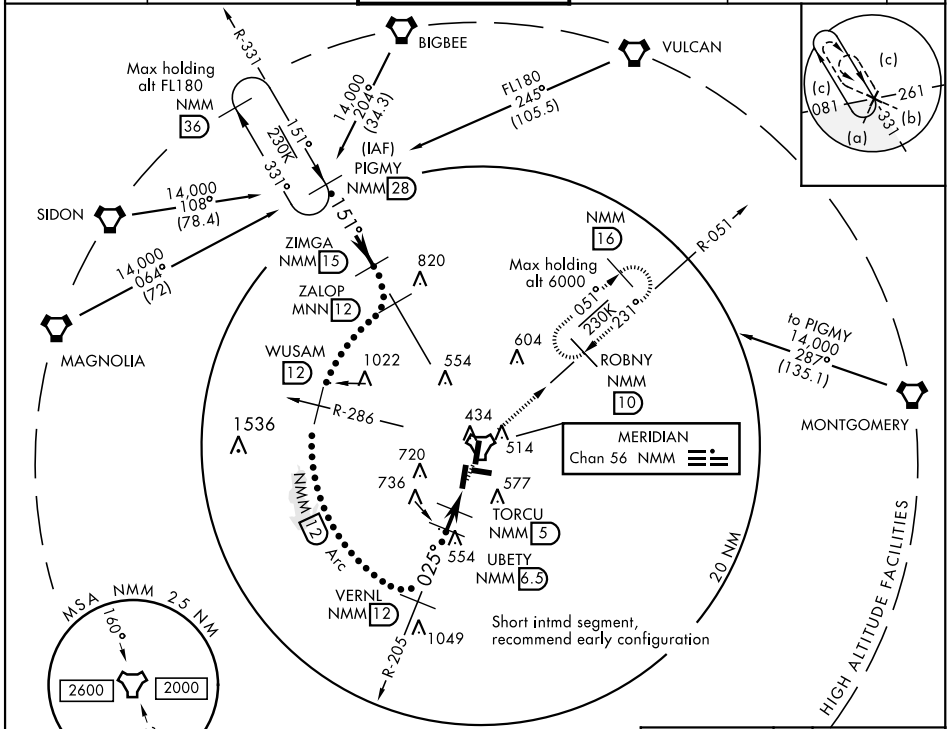
TACAN Chan 56	NMM 025°	APCH CRS 025°	Rwy ldg TDZE 254 Arprt Elev 316	JAL-5079 [USN]	MERIDIAN NAS (MC CAIN FIELD) (KNMM)
-------------------------	--------------------	-------------------------	---	----------------	-------------------------------------

▼ * When ALS inop, increase CAT CDE vis to 1½ miles.

ALSF-1

MISSED APPROACH: Climb to 2100 via NMM R-205 to NMM TACAN then via R-051 to ROBNY and hold.

ATIS ★ 290.525	MERIDIAN APP CON 120.95 276.4	NAVY MC CAIN TOWER ★ 126.2 340.2	GND CON 336.4	CLNC DEL 301.0	ASR/ PAR
--------------------------	---	--	-------------------------	--------------------------	-------------



EMERG SAFE ALT 100 NM 3700

PIGMY R-331	ZALOP R-331	WUSAM R-286	VERNL R-205	UBETY NMM 6.5	TORCU NMM 4.5	SIKUE NMM 4
14,000	6000	4000	4000	2100	1400	900

CATEGORY	C	D	E
S-1L *	760-1	506 (500-1)	
CIRCLING	840-1½ 524 (600-1½)	880-2 564 (600-2)	1080-2¾ 764 (800-2¾)

ELEV 316 | TDZE 254