

MERIDIAN, MISSISSIPPI

TACAN RWY 1L

TACAN NMM
Chan 56

APCH CRS
025°

Rwy Idg 8003
TDZE 254
Arpt Elev 316

JAL-5079 [USN]

MERIDIAN NAS (MC CAIN FIELD) (KNMM)

▼ * When ALS inop, increase CAT AB vis to 1 mile;
CAT CDE vis to 1½ miles.

ALSF-1
A1

MISSED APPROACH: Climb to 2100 direct NMM TACAN
then via R-051 to ROBNY and hold.

ATIS ★
290.525

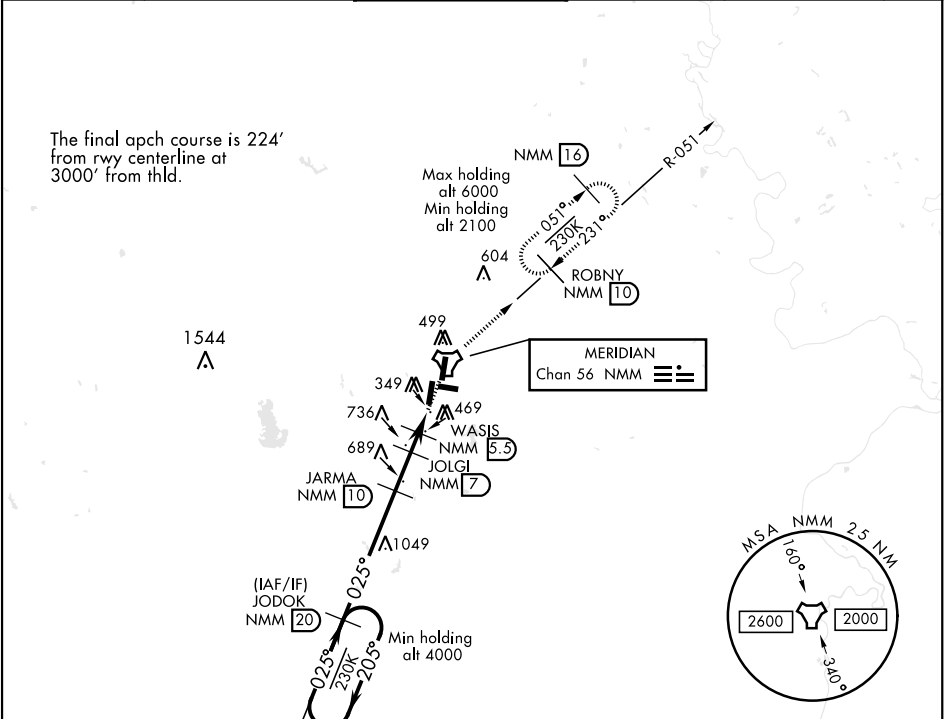
MERIDIAN APP CON
120.95 276.4

NAVY MC CAIN TOWER ★
126.2 340.2

GND CON
336.4

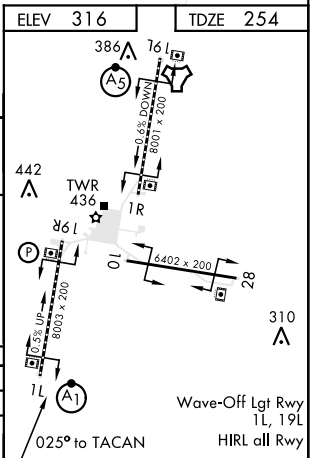
CLNC DEL
301.0

ASR/
PAR



RADAR REQUIRED
EMERG SAFE ALT 100 NM 3700

JODOK 20		JARMA 10		JOLGI 7	WASIS 5.3	AGLEY 3.9	TACAN
4000		2500		1500	1040		
205°		025°		025°			
3.04°		TCH 40					
3 NM		1.5 NM		1.6 NM	0.8 NM		
CATEGORY	A	B	C	D	E		
S-1L *	760-½	506 (500-½)	760-1	506 (500-1)			
CIRCLING	840-1	524 (600-1)	840-1½ 524 (600-1½)	880-2 564 (600-2)	1080-2¾ 764 (800-2¾)		



MERIDIAN, MISSISSIPPI 32°33' N - 88°33' W MERIDIAN NAS (MC CAIN FIELD) (KNMM)

Amtd 1 07NOV19

TACAN RWY 1L

SC-4, 31 DEC 2020 to 28 JAN 2021

SC-4, 31 DEC 2020 to 28 JAN 2021