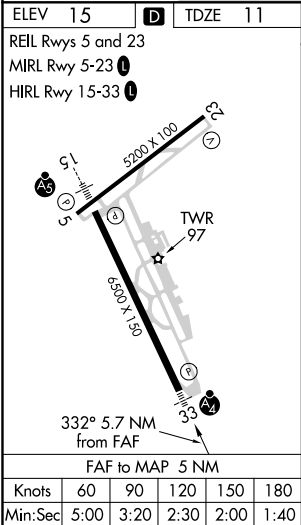
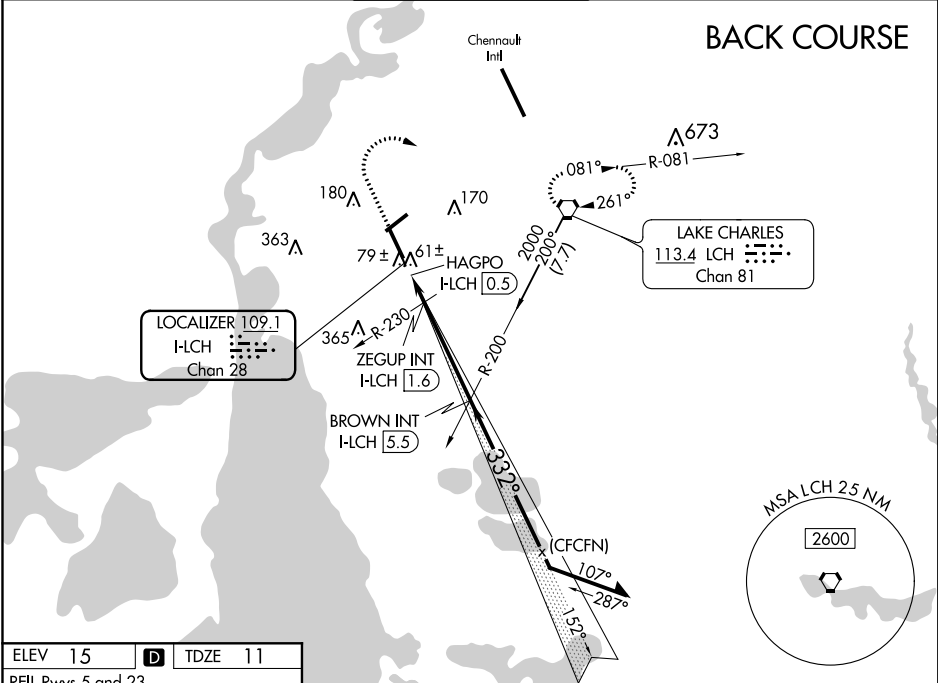


LOC I-LCH 109.1 Chan 28	APP CRS 332°	Rwy Idg 6500 TDZE 11 Apt Elev 15
---	------------------------	---

LOC BC RWY 33
LAKE CHARLES RGNL (LCH)

 For inop MALSF, increase S-33 Cat D visibility to 1¾ mile. For inop MALSF, increase ZEGUP Fix Minimums S-33 Cats C and D visibility to ¾ mile. ASR	 MISSED APPROACH: Climb to 1000 then climbing right turn to 2000 direct LCH VORTAC and hold.
--	---

ATIS 118.75	LAKE CHARLES APP CON* 119.35 353.75	LAKE CHARLES TOWER* 120.7 (CTAF) 0 257.8	GND CON 121.8	CLNC DEL 126.25	UNICOM 122.95
-----------------------	---	--	-------------------------	---------------------------	-------------------------



1000	2000	LCH	BROWN INT I-LCH 5.5	Remain within 10 NM
VGSF and descent angles not coincident (VGSF Angle 3.00/TCH 54).				
ZEGUP INT I-LCH 1.6				
HAGPO I-LCH 0.5				
640				
1900				
Disregard GS indications.				
0.7 1.1 NM 3.9 NM				
CATEGORY	A	B	C	D
S-33	640-¾ 629 (700-¾)		640-1½ 629 (700-1½)	
CIRCLING	640-1 625 (700-1)		640-1¾ 625 (700-1¾)	680-2 665 (700-2)
ZEGUP FIX MINIMUMS (DUAL VOR RECEIVERS OR DME REQUIRED)				
S-33	320-¾ 309 (400-¾)			
CIRCLING	440-1 425 (500-1)	480-1 465 (500-1)	580-1½ 565 (600-1½)	680-2 665 (700-2)

SC-4, 31 DEC 2020 to 28 JAN 2021

SC-4, 31 DEC 2020 to 28 JAN 2021