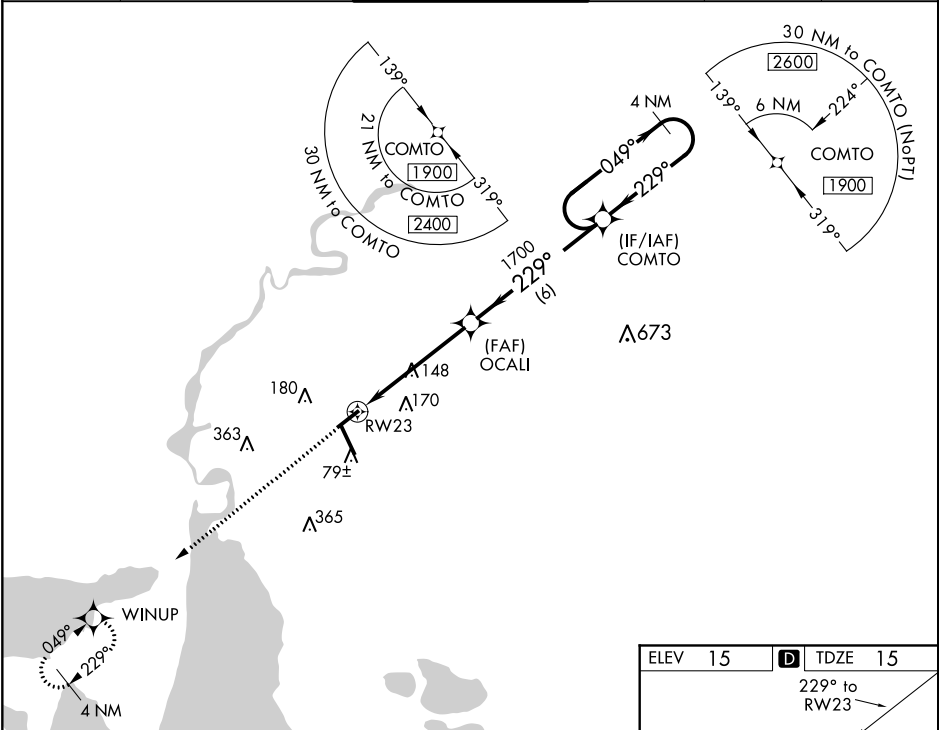


WAAS CH <b>61041</b> <b>W23A</b>	APP CRS <b>229°</b>	Rwy Idg <b>5200</b> TDZE <b>15</b> Apt Elev <b>15</b>
--	------------------------	---

**RNAV (GPS) RWY 23**  
LAKE CHARLES RGNL (LCH)

ASR	For uncompensated Baro-VNAV systems, LNAV/VNAV NA below -2°C (29°F) or above 54°C (130°F). Rwy 23 helicopter visibility reduction below ¾ SM NA. DME/DME RNP-0.3 NA.	MISSED APPROACH: Climb to 1700 direct WINUP and hold.
-----	--	---

ATIS <b>118.75</b>	LAKE CHARLES APP CON * <b>119.35 353.75</b>	LAKE CHARLES TOWER * <b>120.7 (CTAF) 0 257.8</b>	GND CON <b>121.8</b>	CLNC DEL <b>126.25</b>	UNICOM <b>122.95</b>
-----------------------	--	---	-------------------------	---------------------------	-------------------------



1700	WINUP	OCALI	COMTO	4 NM Holding Pattern
*LNAV only.		1700	229°	049° → 1900
	*1.1 NM to RWY 23			← 229°
		1700		GP 3.00° TCH 47
	1.1	4 NM	6 NM	
CATEGORY	A	B	C	D
LPV DA	265-¾	250 (300-¾)		
LNAV/VNAV DA	301-⅞	286 (300-⅞)		
LNAV MDA	400-1 385 (400-1)	400-1½ 385 (400-1½)		
CIRCLING	440-1 425 (500-1)	480-1 465 (500-1)	580-1½ 565 (600-1½)	680-2 665 (700-2)

