

WAAS
CH **56215**
W33A

APP CRS
332°

Rwy Idg
TDZE **11**
Apt Elev **15**

RNAV (GPS) RWY 33

LAKE CHARLES RGNL (LCH)

RNP APCH.
For uncompensated Baro-VNAV systems, LNAV/VNAV NA below -3°C (27°F) or above 43°C (109°F). For inop MALSF, increase LNAV/VNAV all Cats visibility to 7/6 and LNAV all Cats visibility to 1 mile.

MALSF

MISSED APPROACH: Climb to 1700 direct ZUKLA and hold.

ATIS
118.75

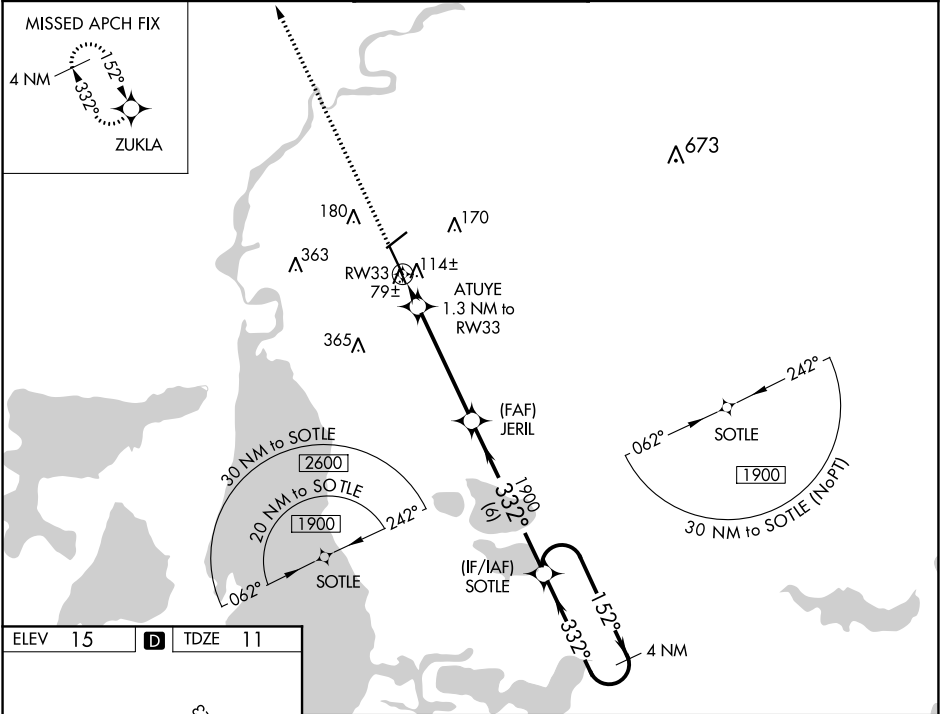
LAKE CHARLES APP CON★
119.35 353.75

LAKE CHARLES TOWER★
120.7 (CTAF) 257.8

GND CON
121.8

CLNC DEL
126.25

UNICOM
122.95



ELEV 15 TDZE 11

REIL Rwy 5 and 23
MIRL Rwy 5-23
HIRL Rwy 15-33

332° to RW33

1700 ZUKLA

*LNAV only.

ATUYE 1.3 NM to RW33

RW33

JERIL 1900

SOTLE

4 NM Holding Pattern

GP 3.00° TCH 50

VGSI and RNAV glidepath not coincident (VGSI Angle 3.00/TCH 54).

CATEGORY	A	B	C	D
LPV DA		211-3/4	200 (200-3/4)	
LNAV/VNAV DA		296-3/4	285 (300-3/4)	
LNAV MDA		380-3/4	369 (400-3/4)	
CIRCLING	440-1 425 (500-1)	480-1 465 (500-1)	580-1½ 565 (600-1½)	680-2¼ 665 (700-2¼)