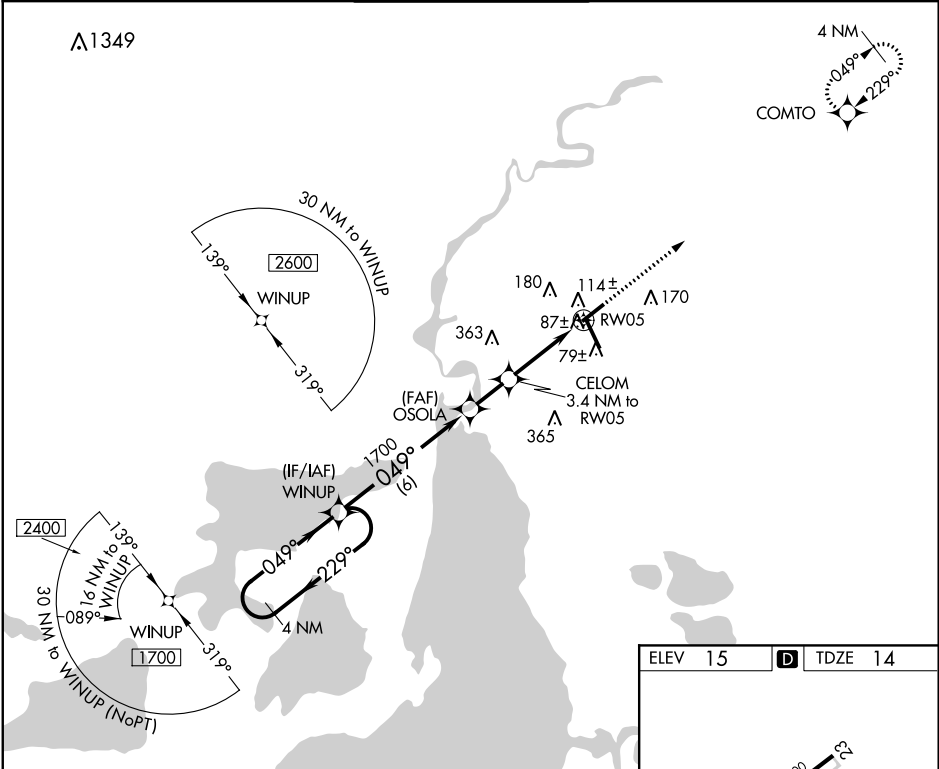


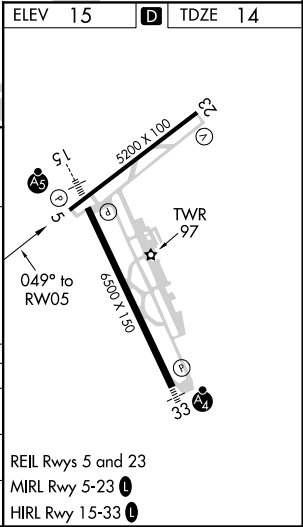
WAAS CH 69440 W05A	APP CRS 049°	Rwy Idg TDZE Apt Elev	5200 14 15
--	------------------------	-----------------------------	---------------------------------------

RNAV (GPS) RWY 5
LAKE CHARLES RGNL (LCH)

<div><div><div>▼</div><div>ASR</div></div><div>Rwy 5 helicopter visibility reduction below ¾ SM NA. DME/DME RNP-0.3 NA.</div></div>		<div>MISSED APPROACH: Climb to 1900 direct COMTO and hold.</div>			
<div>ATIS 118.75</div>	<div>LAKE CHARLES APP CON ★ 119.35 353.75</div>	<div>LAKE CHARLES TOWER ★ 120.7 (CTAF) 0 257.8</div>	<div>GND CON 121.8</div>	<div>CLNC DEL 126.25</div>	<div>UNICOM 122.95</div>



<div>4 NM Holding Pattern</div> <div>WINUP</div> <div>OSOLA</div> <div>1900</div> <div>COMTO</div>				
<div>1700 ← 229°</div> <div>049° →</div> <div>049°</div> <div>1700</div> <div>CELOM 3.4 NM to RW05</div> <div>0.9 NM to RW05</div> <div>1140</div> <div>3.00° TCH 49</div> <div>6 NM</div> <div>1.8 NM</div> <div>2.5 NM</div> <div>0.9</div>				
CATEGORY	A	B	C	D
LP MDA	340-1 326 (400-1)			
LNAV MDA	380-1 366 (400-1)			
CIRCLING	440-1 425 (500-1)	480-1 465 (500-1)	580-1½ 565 (600-1½)	680-2 665 (700-2)



SC-4, 31 DEC 2020 to 28 JAN 2021

SC-4, 31 DEC 2020 to 28 JAN 2021