

RNAV (GPS) RWY 34

APCH CRS	Rwy Idg	4107
338°	THRE	278
	Arpt Elev	330

AL-5096 [USA]

POLK AAF (KPOE)

T * When ALS inop, increase CAT AB vis to 1 mile, CAT CD vis to 1 3/8 mile.



MISSED APPROACH: Climb to 2000 direct BITAY and on track 340° to COCOS and hold.

ATIS
134.85 282.2

POLK APP CON
123.7 261.3

POLK TOWER
119.0 257.75

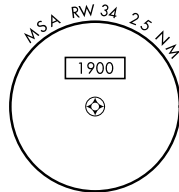
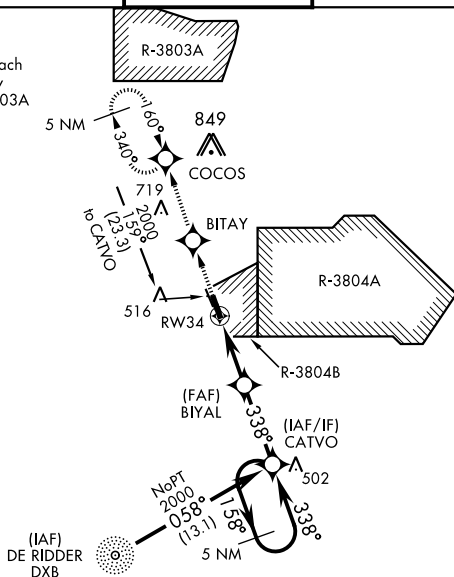
GND CON
121.8 239.25

ASR/PAR

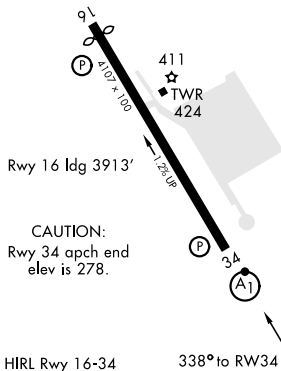
DME/DME RNP-0.3 NA

CAUTION: Pilots using this approach must acquaint themselves with any activities in R-3804A, B and R-3803A located 6 NM north of COCOS.

RADAR required for arrivals at
DXB NDB and CATVO.



ELEV 330		THRE 278
----------	--	----------

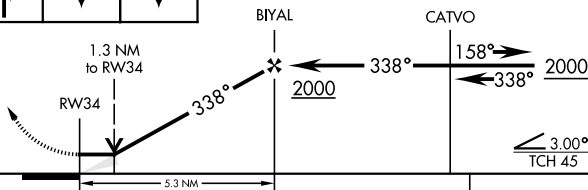


2000

BITAY

COCO

VGS| and descent angles not coincident.



CATEGORY	A	B	C	D
LNAV MDA *	760-¾	482 (500-¾)	760-1	482 (500-1)
CIRCLING	820-1	490 (500-1)	820-1½ 490 (500-1½)	880-2 550 (600-2)

FORT POLK, LOUISIANA

31° 03' N-93° 11' W

POLK AAF (KPOE)

Amdt 1A 26MAR20

RNAV (GPS) RWY 34

SC-4, 31 DEC 2020 to 28 JAN 2021

SC-4, 31 DEC 2020 to 28 JAN 2021