

WAAS CH 65817 W33A	APP CRS 330°	Rwy Idg 10702 TDZE 17 Apt Elev 17
--	------------------------	--

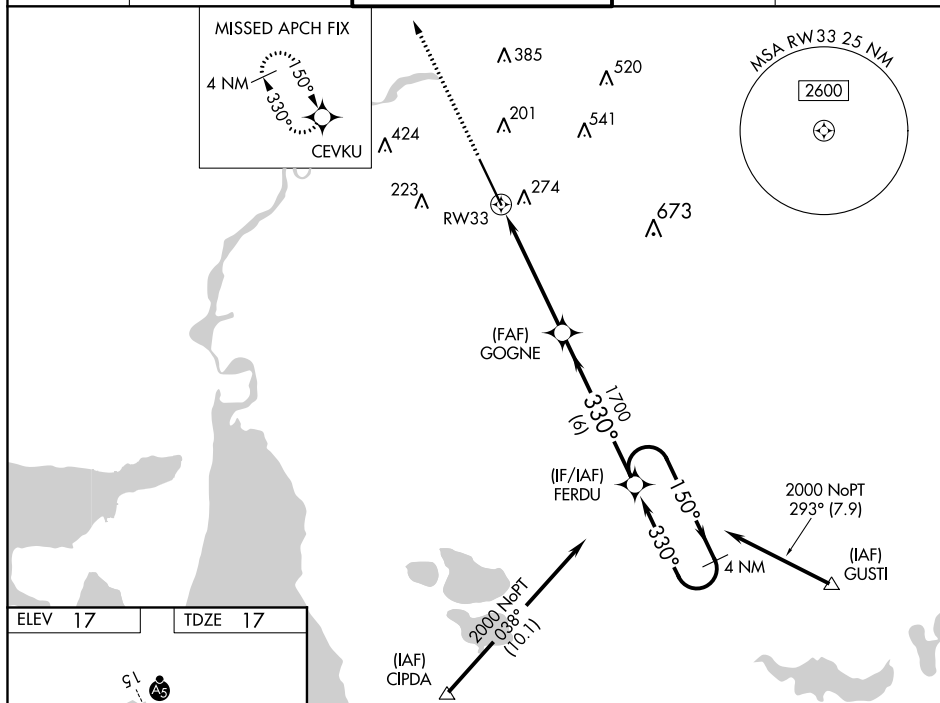
RNAV (GPS) RWY 33
CHENNAULT INTL (CWF)

RNP APCH.

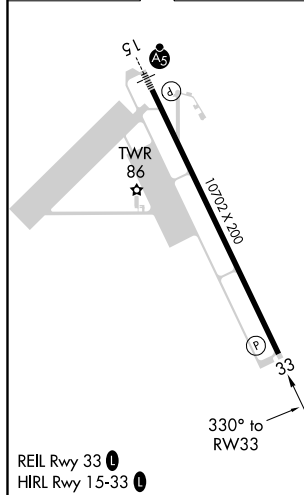
T Baro-VNAV NA when using Lake Charles Rgnl altimeter setting. For uncompensated Baro-VNAV systems, LNAV/VNAV NA below -15°C or above 49°C. VDP NA when using Lake Charles Rgnl altimeter setting. When local altimeter setting not received, use Lake Charles Rgnl altimeter setting; increase LPV DA to 232 feet; increase LNAV/VNAV DA to 510 feet; increase all MDA 20 feet and LNAV visibility Cat C ½ SM and Circling Cat D ½ SM.

MISSED APPROACH: Climb to 2000 direct CEVKU and hold.

ATIS 120.0	LAKE CHARLES APP CON ★ 119.8 282.3	CHENNAULT TOWER ★ 124.2 (CTAF) 0 290.4	GND CON 121.65 275.8	UNICOM 122.95
---------------	---------------------------------------	---	-------------------------	------------------



ELEV 17	TDZE 17
---------	---------



2000 ↑

CEVKU

*RNAV only.

*1.6 NM to RW33

RW33

GOGNE 1700

1700

330°

150°

330°

2000

4 NM Holding Pattern

GP 3.00° TCH 53

CATEGORY	A	B	C	D
LPV DA	217- $\frac{3}{4}$	200 (200- $\frac{3}{4}$)		
LNAV/VNAV	494- $1\frac{3}{4}$	477 (500- $1\frac{3}{4}$)		
LNAV MDA	580-1 563 (600-1)	580- $1\frac{5}{8}$ 563 (600- $1\frac{5}{8}$)	580- $1\frac{3}{4}$ 563 (600- $1\frac{3}{4}$)	
C CIRCLING	640-1 623 (700-1)	640- $1\frac{3}{4}$ 623 (700- $1\frac{3}{4}$)	740- $2\frac{1}{4}$ 723 (800- $2\frac{1}{4}$)	

RNAV (GPS) RWY 33