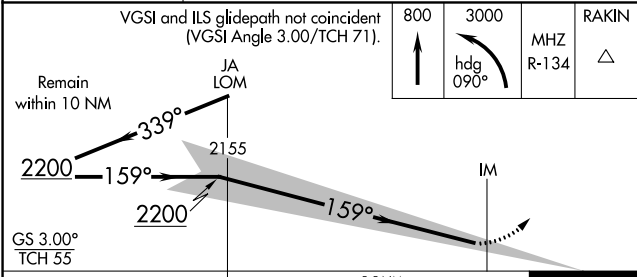
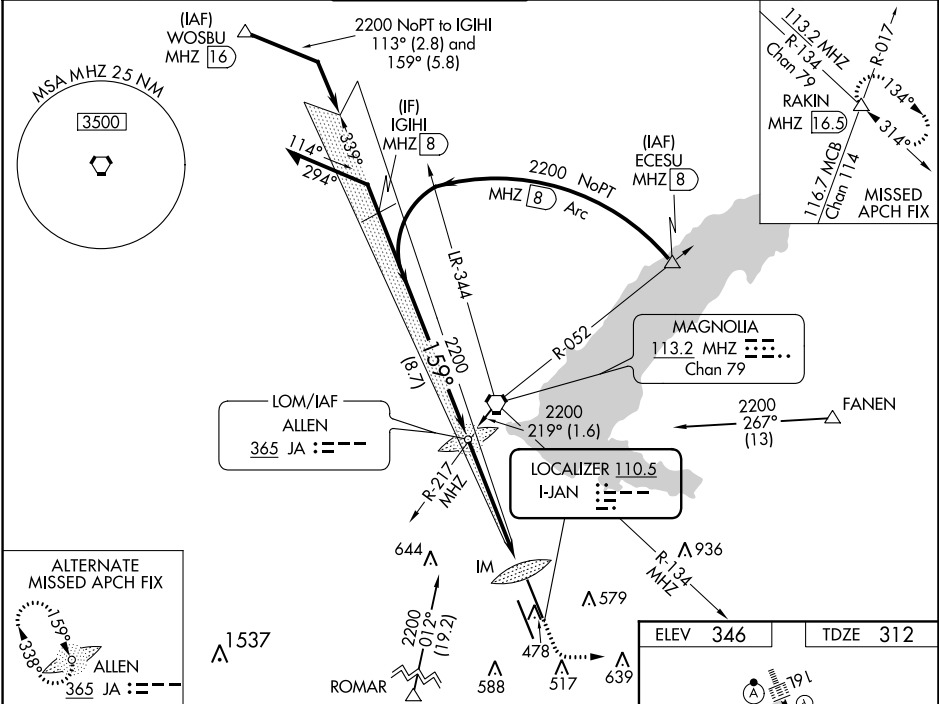


LOC I-JAN 110.5	APP CRS 159°	Rwy Idg TDZE Apt Elev	8500 312 346
---------------------------	------------------------	-----------------------------	---

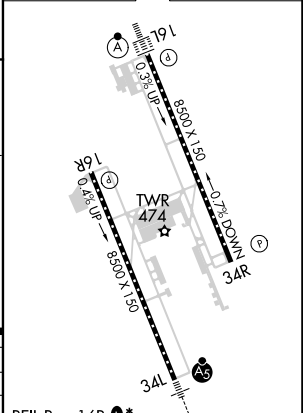
ILS RWY 16L (SA CAT I)
JACKSON-MEDGAR WILEY EVERS INTL (JAN)

ASR Requires specific OPSPEC, MSPEC, or LOA approval and use of HUD to DA. When control tower closed, procedure NA. When local altimeter setting not received, procedure NA.	ALSF-2 	MISSED APPROACH: Climb to 800 then climbing left turn to 3000 on heading 090° and MHZ VORTAC R-134 to RAKIN INT/MHZ 16.5 DME and hold.
--	------------	--

ATIS 121.05	JACKSON APP CON ★ 123.9 317.7	JACKSON TOWER ★ 120.9 (CTAF) 0 352.0	GND CON 121.7 348.6	120.7 0 *	UNICOM 122.95
-----------------------	---	--	-------------------------------	------------------	-------------------------



ELEV 346	TDZE 312
----------	----------



**SA CATEGORY I ILS - SPECIAL AIRCREW
& AIRCRAFT CERTIFICATION REQUIRED**

REIL Rwy 16R 1*
REIL Rwy 34R 1
HIRL Rwy 16L-34R and 16R-34L 1

SC-4, 31 DEC 2020 to 28 JAN 2021

SC-4, 31 DEC 2020 to 28 JAN 2021