

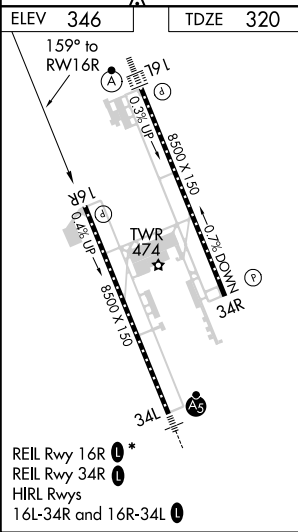
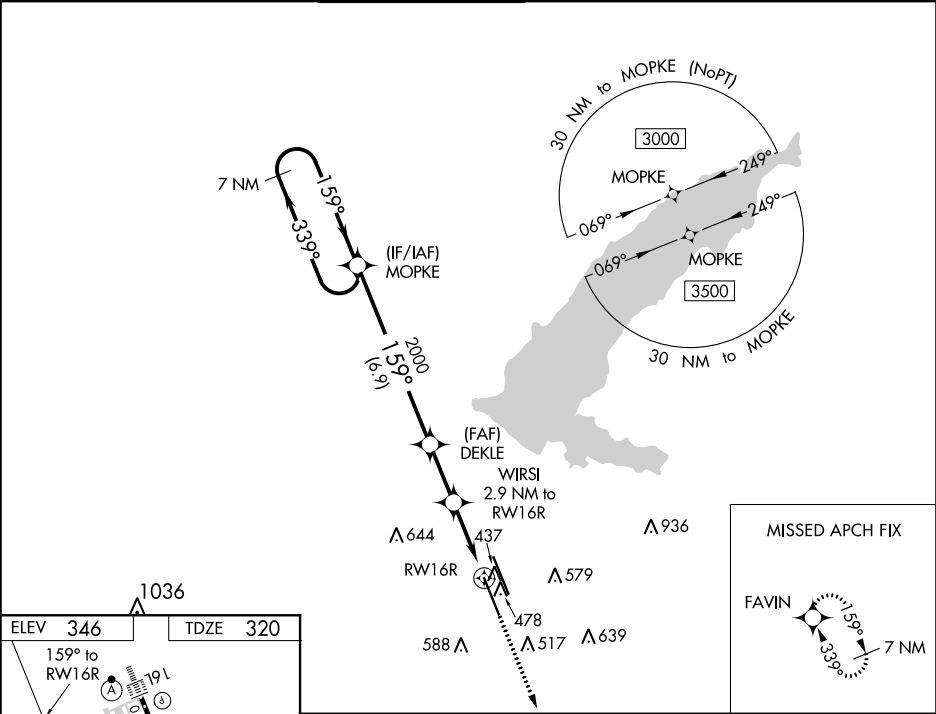
WAAS CH <b>49211</b> <b>W16B</b>	APP CRS <b>159°</b>	Rwy Idg <b>8500</b> TDZE <b>320</b> Apt Elev <b>346</b>
--	------------------------	---

RNAV (GPS) RWY 16R  
JACKSON-MEDGAR WILEY EVERS INTL (JAN)

**⚠** For uncompensated Baro-VNAV systems, LNAV/VNAV NA below -7°C (20°F) or above 54°C (130°F).  
**⚠** Circling NA for Cat E southwest of Rwy 16R-34L. DME/DME RNP-0.3 NA. When local altimeter setting not received, use Hawkins Field altimeter setting and increase all DA 19 feet and all MDA 20 feet, increase LNAV/VNAV all Cats and LNAV Cat C/D/E visibility 1/8 SM. Rwy 16R helicopter visibility reduction below 3/4 SM NA. VDP and Baro-VNAV NA when using Hawkins Field altimeter setting.

**MISSED APPROACH:**  
Climb to 3000 direct FAVIN and hold.

ATIS <b>121.05</b>	JACKSON APP CON * <b>123.9 317.7</b>	JACKSON TOWER * <b>120.9 (CTAF) 0 352.0</b>	GND CON <b>121.7 348.6</b>	<b>120.7 0 *</b>	UNICOM <b>122.95</b>
-----------------------	---	--	-------------------------------	------------------	-------------------------



7 NM Holding Pattern MOPKE		VGSI and RNAV glidepath not coincident (VGSI Angle 3.00/TCH 80).		3000	FAVIN
3000 ← 339°		159° →		2000	WIRSI 2.9 NM to RW16R
GP 3.00° TCH 55		*1280		*1.1 NM to RW16R	*LNAV only.
6.9 NM		2.3 NM		1.8 NM	1.1 NM
CATEGORY	A	B	C	D	E
LPV DA	621-1 301 (300-1)				
LNAV/VNAV DA	638-1 318 (300-1)				
LNAV MDA	720-1	400 (400-1)	720-1 1/8	400 (400-1 1/8)	
CIRCLING	880-1	534 (600-1)	900-1 1/2 554 (600-1 1/2)	960-2 614 (700-2)	1040-2 1/2 694 (700-2 1/2)

SC-4, 31 DEC 2020 to 28 JAN 2021

SC-4, 31 DEC 2020 to 28 JAN 2021