

WAAS CH 45811 W34B	APP CRS 339°	Rwy Idg 8500 TDZE 346 Apt Elev 346
--	------------------------	---

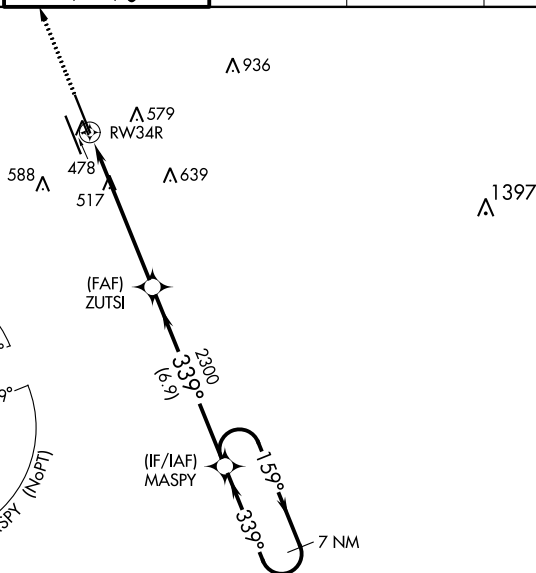
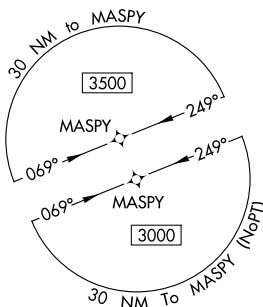
RNAV (GPS) RWY 34R
JACKSON-MEDGAR WILEY EVERS INTL (JAN)

▼ For uncompensated Baro-VNAV systems, LNAV/VNAV NA below -7°C (20°F) or above 54°C (130°F). Circling NA for Cat E southwest of Rwy 16R-34L. DME/DME RNP-0.3 NA. When local altimeter setting not received, use Hawkins Field altimeter setting and increase all DA 19 feet and all MDA 20 feet, increase LPV all Cats visibility to RVR 5100, LNAV/VNAV all Cats visibility to 1/3 SM and LNAV Cats C/D/E visibility to 1/2 SM. VDP and Baro-VNAV NA when using Hawkins Field altimeter setting. Helicopter visibility reduction below 3/4 SM NA.

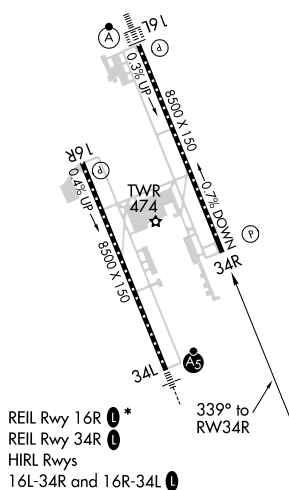
MISSED APPROACH: Climb to 3000 direct KAYER and hold.

ATIS 121.05	JACKSON APP CON ★ 123.9 317.7	JACKSON TOWER ★ 120.9 (CTAF) 0 352.0	GND CON 121.7 348.6	120.7 0 *	UNICOM 122.95
----------------	----------------------------------	---	------------------------	-----------	------------------

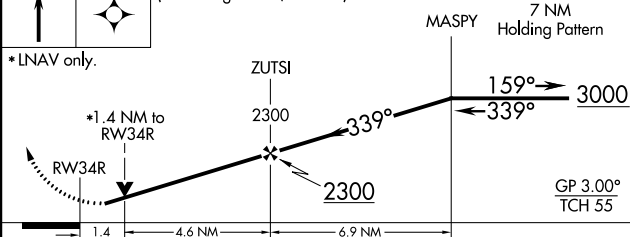
MISSED APCH FIX




ELEV 346		TDZE 346
----------	--	----------



3000	KAYER	VGSI and RNAV glidepath not coincident (VGSI Angle 3.00/TCH 66).
------	-------	--



CATEGORY	A	B	C	D	E
LPV DA	646/47 300 (300-1)				
LNAV/ VNAV DA	846-1 $\frac{5}{8}$ 500 (500-1 $\frac{5}{8}$)				
LNAV MDA	860/55 514 (600-1)		860-1 $\frac{3}{8}$ 514 (600-1 $\frac{3}{8}$)		
 CIRCLING	880-1 534 (600-1)		900-1 $\frac{1}{2}$ 554 (600-1 $\frac{1}{2}$)	960-2 614 (700-2)	1040-2 $\frac{1}{2}$ 694 (700-2 $\frac{1}{2}$)