

VORTAC MHz 113.2 Chan 79	APP CRS 167°	Rwy Idg TDZE 325 Apt Elev 325
--	------------------------	---

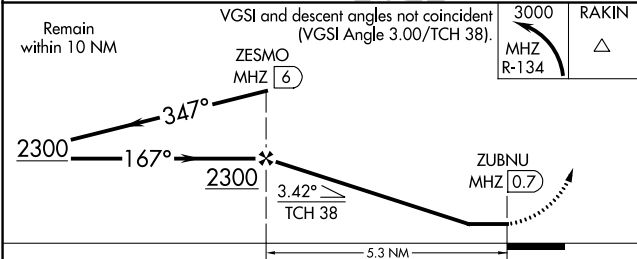
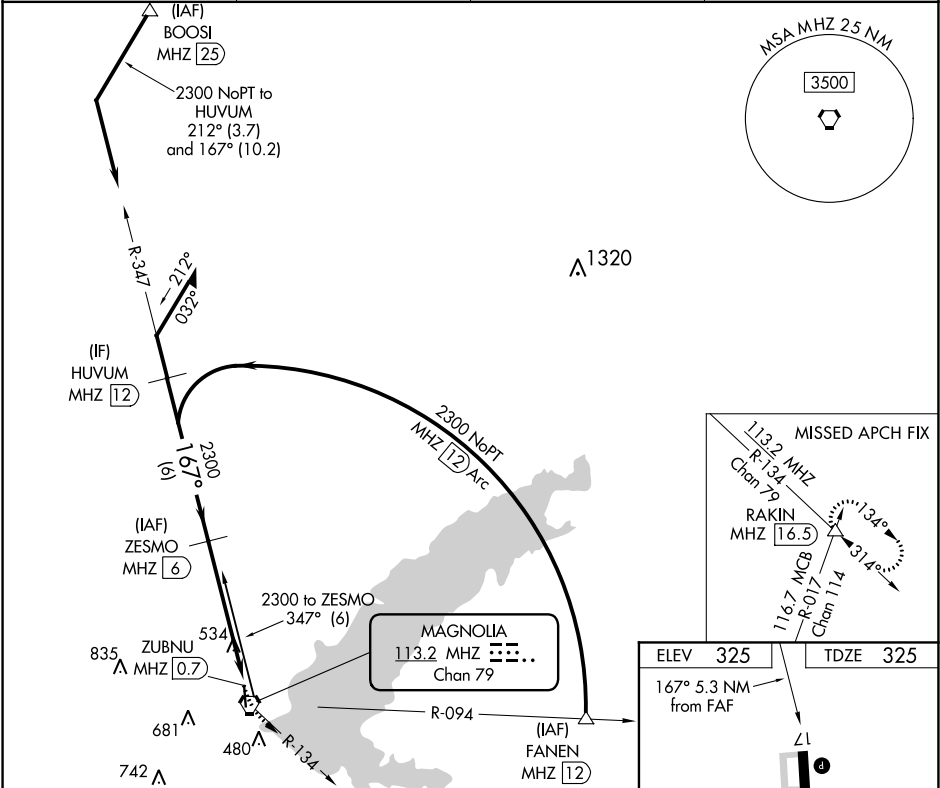
VOR RWY 17
BRUCE CAMPBELL FIELD (MBO)

DME required.

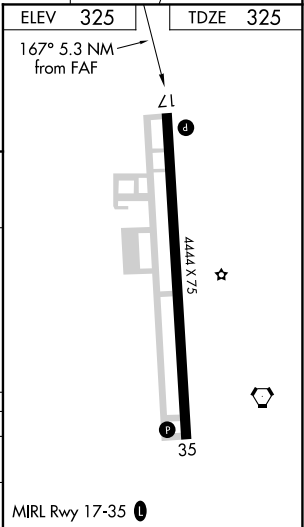
▼ Rwy 17 helicopter visibility reduction below 1 SM NA. When local altimeter setting not received, use Jackson-Medgar Wiley Evers Intl altimeter setting and increase all MDA 40 feet, and Circling Cts C/D ¼ SM. Straight-in Rwy 17 NA at night, Circling Rwy 17 NA at night.

▲ MISSED APPROACH: Climbing left turn to 3000 on MHz VORTAC R-134 to RAKIN INT/MHZ 16.5 DME.

AWOS-3PT 119.125	JACKSON APP CON ★ 123.9 317.7	CLNC DEL 125.9	UNICOM 122.8 (CTAF) 0
----------------------------	---	--------------------------	---------------------------------



CATEGORY	A	B	C	D
S-17	800-1	475 (500-1)	800-1¾	475 (500-1¾)
CIRCLING	820-1 495 (500-1)	840-1 515 (600-1)	1040-2 715 (800-2)	1040-2¼ 715 (800-2¼)



SC-4, 31 DEC 2020 to 28 JAN 2021

SC-4, 31 DEC 2020 to 28 JAN 2021