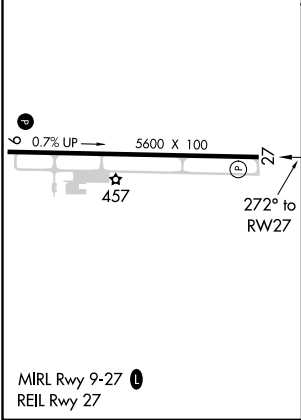
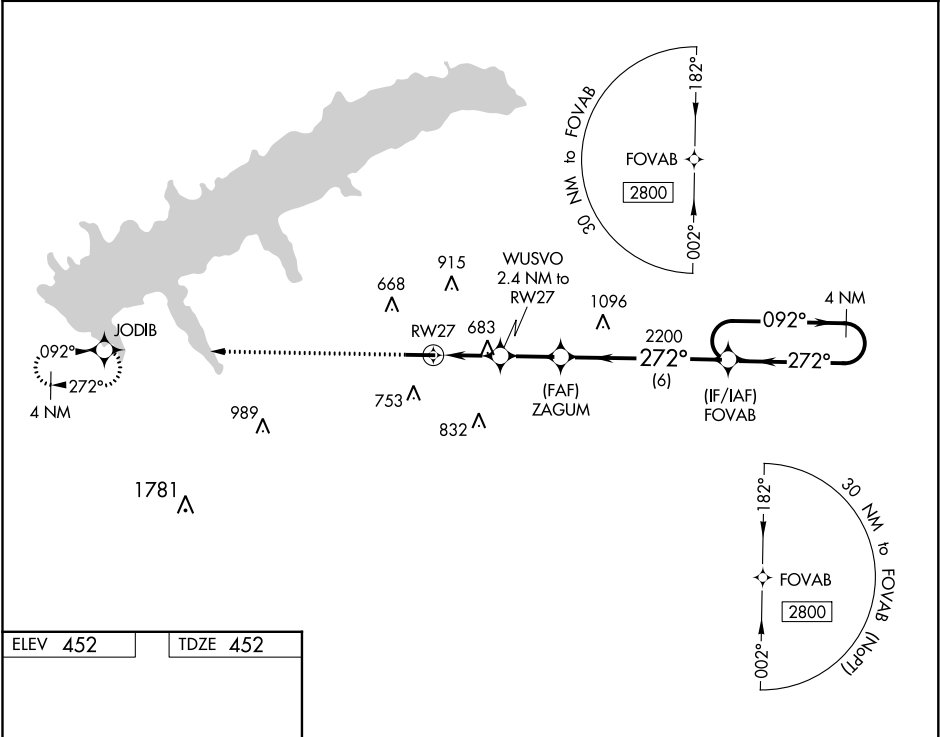


WAAS CH <b>63235</b> <b>W27A</b>	APP CRS <b>272°</b>	Rwy Idg TDZE Apt Elev	<b>5600</b> <b>452</b> <b>452</b>
--	------------------------	-----------------------------	---

**RNAV (GPS) RWY 27**  
UNIVERSITY-OXFORD (UOX)

<p><b>▼</b> <b>▲</b></p> <p>DME/DME RNP-0.3 NA. VDP NA with Olive Branch altimeter setting. When local altimeter setting not received, use Olive Branch altimeter setting and increase all MDA 100 feet; increase LNAV and LP Cats C, D visibilities ¾ mile, and Circling Cat C visibility ¼ mile. Rwy 27 helicopter visibility reduction below ¾ SM NA.</p>	<p>MISSED APPROACH: Climb to 2800 direct JODIB and hold.</p>
--	--

AWOS-3PT <b>132.725</b>	MEMPHIS CENTER <b>128.5 381.4</b>	GCO <b>135.075</b>	UNICOM <b>123.0 (CTAF) 0</b>
----------------------------	--------------------------------------	-----------------------	---------------------------------



2800	JODIB	WUSVO 2.4 NM to RW27	ZAGUM	FOVAB	4 NM Holding Pattern
1.1 NM to RW27	1.3 NM	2.2 NM	6 NM		
1380	2200	1380	2200	2800	
1.1	1.3 NM	2.2 NM	6 NM		
CATEGORY	A	B	C	D	
LP MDA	940-1	488 (500-1)	940-1¾	488 (500-1¾)	
LNAV MDA	960-1	508 (600-1)	960-1¾	508 (600-1¾)	
CIRCLING	980-1 528 (600-1)	1060-1 608 (700-1)	1380-2¾ 928 (1000-2¾)	1380-3 928 (1000-3)	

SC-4, 31 DEC 2020 to 28 JAN 2021

SC-4, 31 DEC 2020 to 28 JAN 2021