

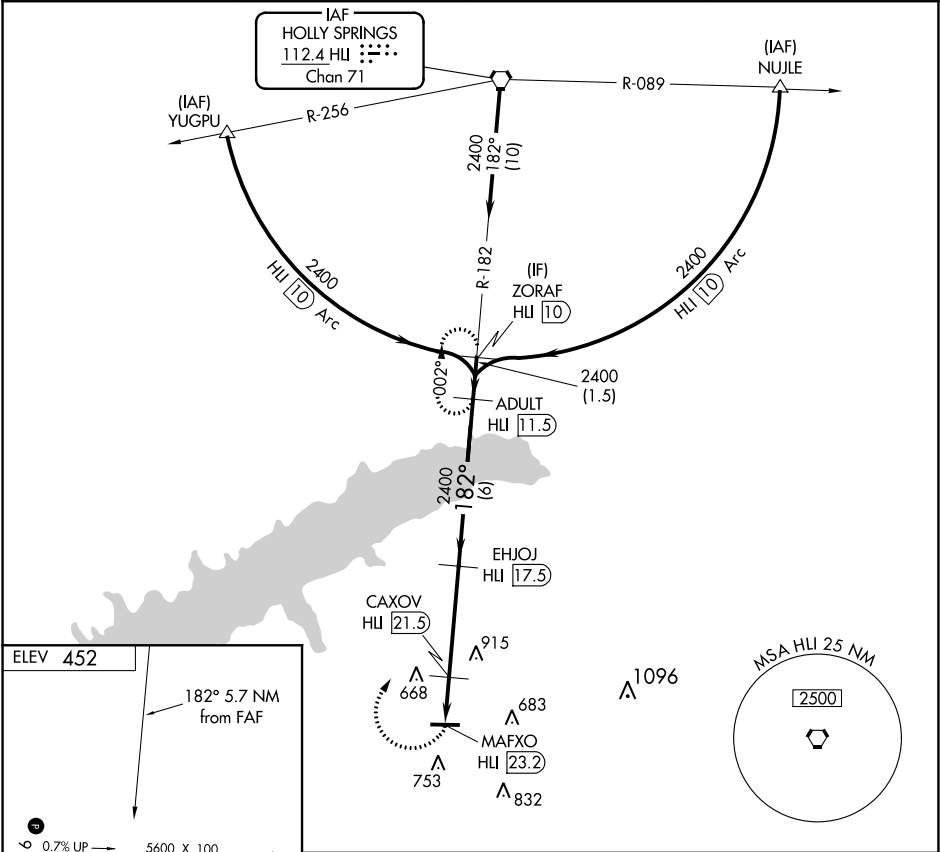
VORTAC HLI 112.4 Chan 71	APP CRS 182°	Rwy Idg TDZE Apt Elev N/A N/A 452
--	------------------------	---

VOR/DME-A
UNIVERSITY-OXFORD (UOX)

When local altimeter setting not received, use Olive Branch altimeter setting and increase all MDA 100 feet, increase Cat C visibility ¼ mile.

MISSED APPROACH: Climbing right turn to 2400 on heading 030° and on HLI R-182 to ADULT/HLI 11.5 DME and hold.

AWOS-3PT 132.725	MEMPHIS CENTER 128.5 381.4	GCO 135.075	UNICOM 123.0 (CTAF)
----------------------------	--------------------------------------	-----------------------	-------------------------------



2400 hdg 030°	HLI R-182	ADULT HLI 11.5	EHJOJ HLI 17.5	ADULT HLI 11.5	ZORAF HLI 10
MAFXO HLI 23.2		CAXOV HLI 21.5	182°		
1440		2400	2400	2400	
1.7		4 NM	6 NM	1.5 NM	
CATEGORY	A	B	C	D	
CIRCLING	980-1 528 (600-1)	1060-1¼ 608 (700-1¼)	1380-2¾ 928 (1000-2¾)	1380-3 928 (1000-3)	

MIRL Rwy 9-27
REIL Rwy 27
OXFORD, MISSISSIPPI
Amdt 5A 08JAN15

34°23'N-89°32'W

UNIVERSITY-OXFORD (UOX)
VOR/DME-A

SC-4, 31 DEC 2020 to 28 JAN 2021

SC-4, 31 DEC 2020 to 28 JAN 2021