

WAAS CH <b>58204</b> <b>W17A</b>	APP CRS <b>168°</b>	Rwy Idg <b>6500</b> TDZE <b>17</b> Apt Elev <b>17</b>
--	------------------------	---

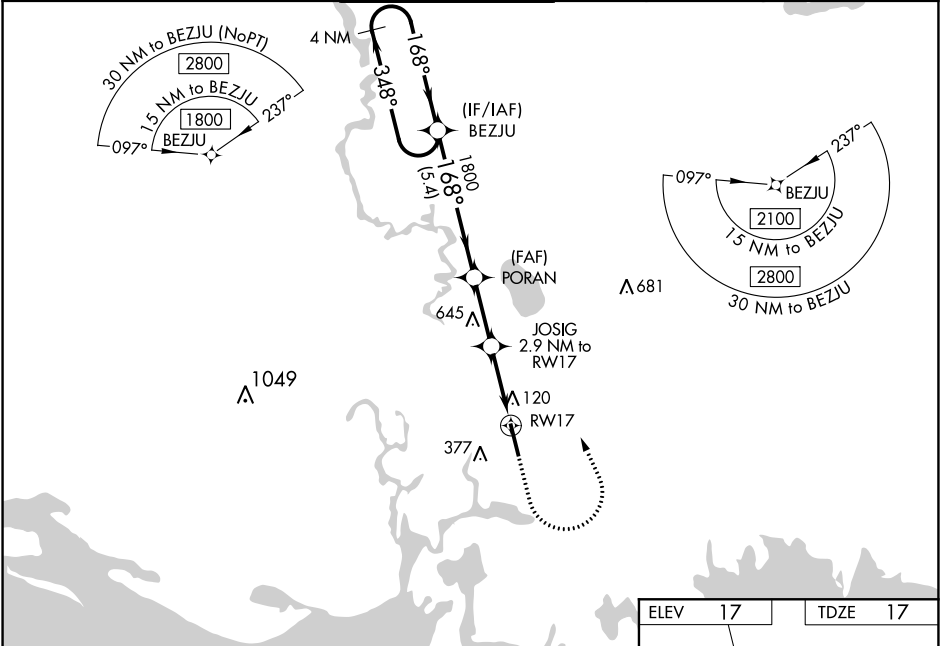
RNAV (GPS) RWY 17  
TRENT LOTT INTL (PQL)

For uncompensated Baro-VNAV systems, LNAV/VNAV NA below -5°C (23°F) or above 54°C (130°F). DME/DME RNP-0.3 NA. When local altimeter setting not received, use Mobile Rgnl altimeter setting: increase LPV DA to 292 feet and LNAV/VNAV DA to 357 feet. Increase LNAV/VNAV visibility ½ mile all Cats; increase all MDA 80 feet and LNAV Cat C/D visibility ¼ mile and Circling Cat C/D visibility ½ mile. Baro-VNAV and VDP NA with Mobile Rgnl altimeter setting. For inop MALSRS when using Mobile Rgnl altimeter setting increase LPV all Cats visibility to ¾ mile.

MALSRS

MISSED APPROACH:  
Climb to 800 then climbing left turn to 1800 direct BEZJU and hold.

ATIS <b>135.175</b>	MOBILE APP CON ★ <b>121.0 307.1</b>	TRENT LOTT TOWER ★ <b>118.575 (CTAF) 0</b>	GND CON <b>121.725</b>	CLNC DEL <b>121.725</b>	UNICOM <b>122.8</b>
------------------------	--	---	---------------------------	----------------------------	------------------------



VGSI and RNAV glidepath not coincident (VGSI Angle 3.00/TCH 54).		ELEV 17		TDZE 17	
4 NM Holding Pattern		800 1800 BEZJU		168° to RW17	
1800 ← 348° 168° → 1800		*LNAV only.		L1	
GP 3.00° TCH 50		JOSIG 2.9 NM to RW17		TWR 6500 X 100	
5.4 NM 2.5 NM 1.9 NM 1 NM		*1 NM to RW17		MIRL Rwy 17-35 0	
CATEGORY	A	B	C	D	
LPV DA	217-½		200 (200-½)		
LNAV/VNAV DA	282-½		265 (300-½)		
LNAV MDA	380-½ 363 (400-½)		380-⅝ 363 (400-⅝)		
CIRCLING	480-1 463 (500-1)	680-1 663 (700-1)	680-1¾ 663 (700-1¾)	680-2 663 (700-2)	

SC-4, 31 DEC 2020 to 28 JAN 2021

SC-4, 31 DEC 2020 to 28 JAN 2021