

WAAS CH <b>90308</b> <b>W34A</b>	APP CRS <b>341°</b>	Rwy Idg <b>4002</b> TDZE <b>168</b> Apt Elev <b>168</b>
--	------------------------	---

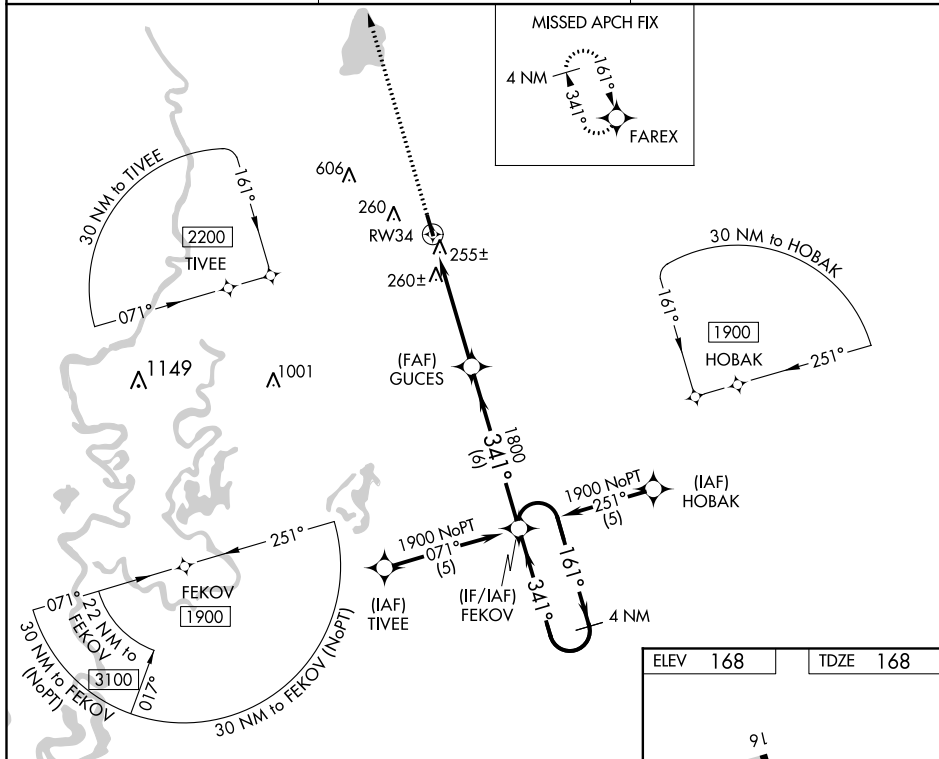
# RNAV (GPS) RWY 34

## MOREHOUSE MEMORIAL (BQP)

**T** Baro-VNAV NA when using Monroe altimeter setting. For uncompensated Baro-VNAV systems, LNAV/VNAV NA below -15°C (5°F) or above 54°C (130°F). DME/DME RNP-0.3 NA. **A** VDP NA when using Monroe altimeter setting. When local altimeter setting not received, use Monroe altimeter setting and increase all DA/MDA 60 feet and all visibilities ¼ mile.

**MISSED APPROACH:**  
Climb to 1800 direct  
FAREX and hold.

AWOS-3PT <b>118.375</b>	MONROE APP CON ★ <b>126.9 307.9</b>	UNICOM <b>122.8</b> (CTAF) <b>0</b>
----------------------------	--	--



1800

FAREX

GUCES

FEKOV

4 NM Holding Pattern

161° →

← 341°

1900

\*INAV only.

\*1 NM to RW34

RW34

1 NM

3.9 NM

6 NM

1800

GP 3.00°

TCH 50

CATEGORY	A	B	C	D
LPV DA	508-1¼	340 (400-1¼)		NA
INAV/VNAV DA	551-1¼	383 (400-1¼)		NA
INAV MDA	520-1	352 (400-1)		NA
CIRCLING	560-1 392 (400-1)	620-1 452 (500-1)	780-1¾ 612 (700-1¾)	NA

