

APP CRS  
**137°**

Rwy Idg **5009**  
TDZE **494**  
Apt Elev **494**

**RNAV (GPS) RWY 14**  
KOSCIUSKO-ATTALA COUNTY (OSX)

RNP APCH.

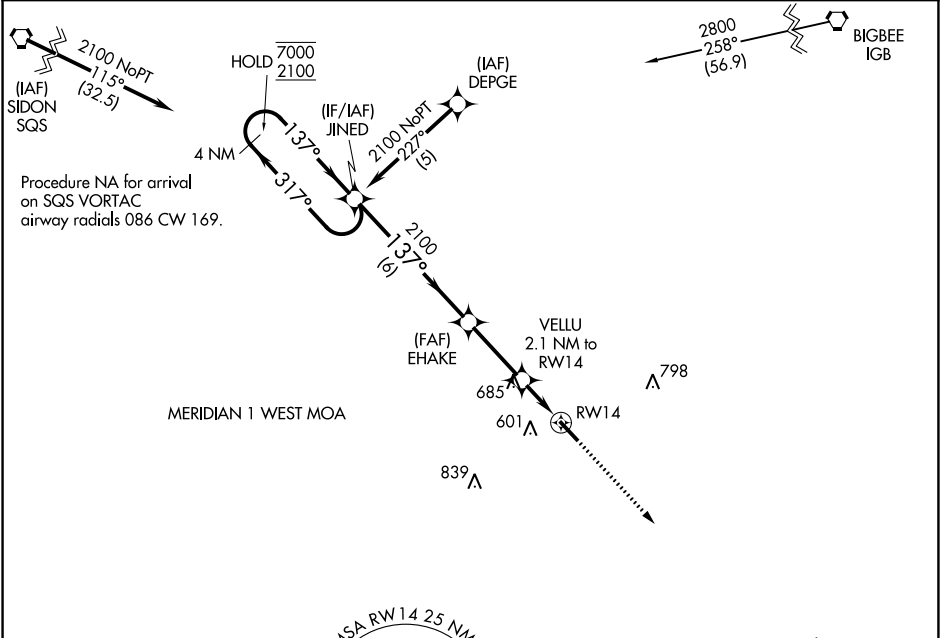
▼

▲ NA

Rwy 14 helicopter visibility reduction below 1 SM NA. Procedure NA at night.  
Use Philadelphia altimeter setting; when not received, use Greenwood altimeter setting and increase all MDAs 80 feet and LNAV Cat C and Circling Cat C visibility ¼ SM.

MISSED APPROACH: Climb to 2200 direct GUDRE and hold.

MPE AWOS-3P <b>118.725</b>	MEMPHIS CENTER <b>132.75 350.25</b>	CTAF <b>122.9</b>
-------------------------------	--	----------------------



ELEV **494** | TDZE **494**

Visual Segment - Obstacles.				2200	GUDRE
CATEGORY	A	B	C	D	
LNAV MDA	1020-1	526 (600-1)	1020-1½ 526 (600-1½)	NA	
CIRCLING	1020-1	526 (600-1)	1020-1½ 526 (600-1½)	NA	