

APP CRS	Rwy Idg	5009
317°	TDZE	480
	Apt Elev	494

RNAV (GPS) RWY 32
KOSCIUSKO-ATTALA COUNTY (OSX)

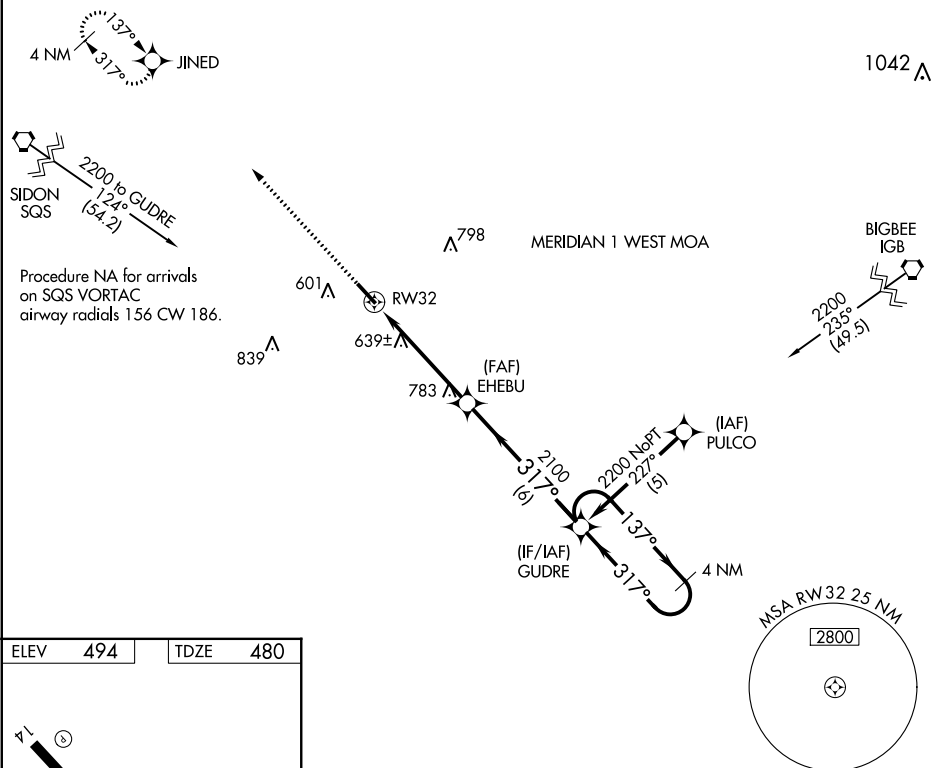
T DME/DME RNP-0.3 NA. Helicopter visibility reduction below 1 SM NA.
A NA Procedure NA at night. Use Philadelphia altimeter setting; when not received, use Greenwood altimeter setting and increase all MDA 100 feet and LNAV Cat C visibility $\frac{3}{8}$ mile and Circling Cat C visibility $\frac{1}{4}$ mile.

MISSED APPROACH: Climb to 2100 direct JINED and hold.

MPE AWOS-3P
118.725

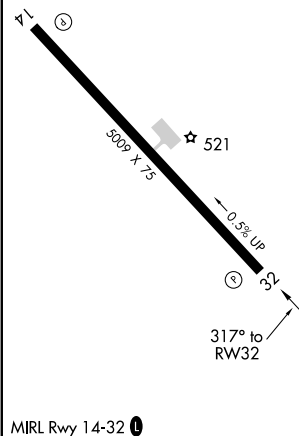
MEMPHIS CENTER
132.75 350.25

CTAF
122.9 L



SC-4, 31 DEC 2020 to 28 JAN 2021

ELEV	494		TDZE	480
------	-----	--	------	-----



KOSCIUSKO, MISSISSIPPI
Orig-B 26JUN14

33°05'N-89°33'W

KOSCIUSKO-ATTALA COUNTY (OSX)
RNAV (GPS) RWY 32

2100

JINED

VGSI and descent angles not coincident (VGSI Angle 3.50/TCH 49).

2100

EHEBU

3.04°

TCH 45°

4.9 NM

6 NM

317°

317°

137°

4 NM Holding Pattern

2200

2100

CATEGORY	A	B	C	D
RNAV MDA	960-1	480 (500-1)	960-1 $\frac{3}{8}$ 480 (500-1 $\frac{3}{8}$)	NA
CIRCLING	1020-1	526 (600-1)	1020-1 $\frac{1}{2}$ 526 (600-1 $\frac{1}{2}$)	NA