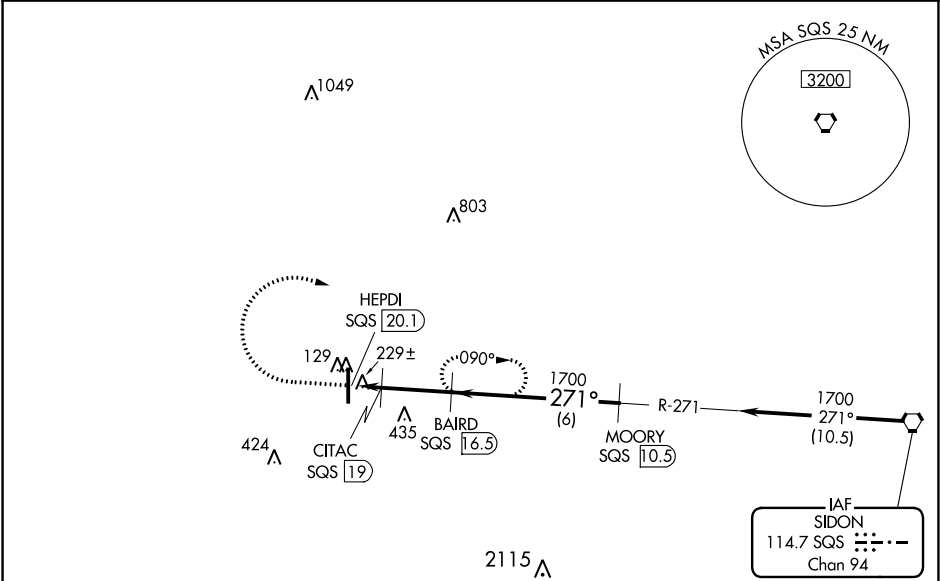


VORTAC SQS	APP CRS	Rwy Idg	N/A
114.7	271°	TDZE	N/A
Chan 94		Apt Elev	126

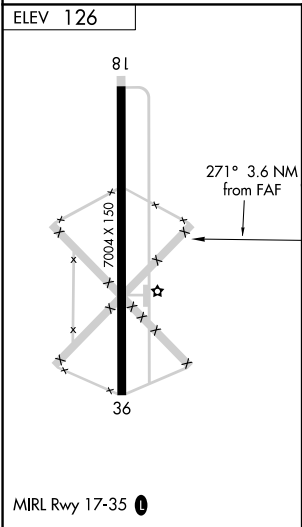
VOR/DME-A  
INDIANOLA MUNI (IDL)

⚠ NA Use Greenville altimeter setting; when not received, use Greenwood altimeter setting and increase all MDA 40 feet and Circling Cat D visibility ¼ mile. Circling to Rwy 18 NA at night. Helicopter visibility reduction below 1 SM NA.	MISSED APPROACH: Climb to 900, then climbing right turn to 1700 on SQS VORTAC R-271 to BAIRD/16.50 DME and hold.
--	--

GLH ASOS 125.525	MEMPHIS CENTER 135,875 269.35	UNICOM 122.8 (CTAF) 0
---------------------	----------------------------------	--------------------------



Procedure NA for arrivals  
at SQS VORTAC  
on airway radial 273.



	900	1700	BAIRD SQS 16.5	
				MOORY SQS 10.5
			CITAC SQS 19	
			HEPDI SQS 20.1	
				1700
				Procedure Turn NA
CATEGORY	A	B	C	D
CIRCLING	580-1 454 (500-1)	580-1¼ 454 (500-1¼)	600-1½ 474 (500-1½)	780-2 654 (700-2)