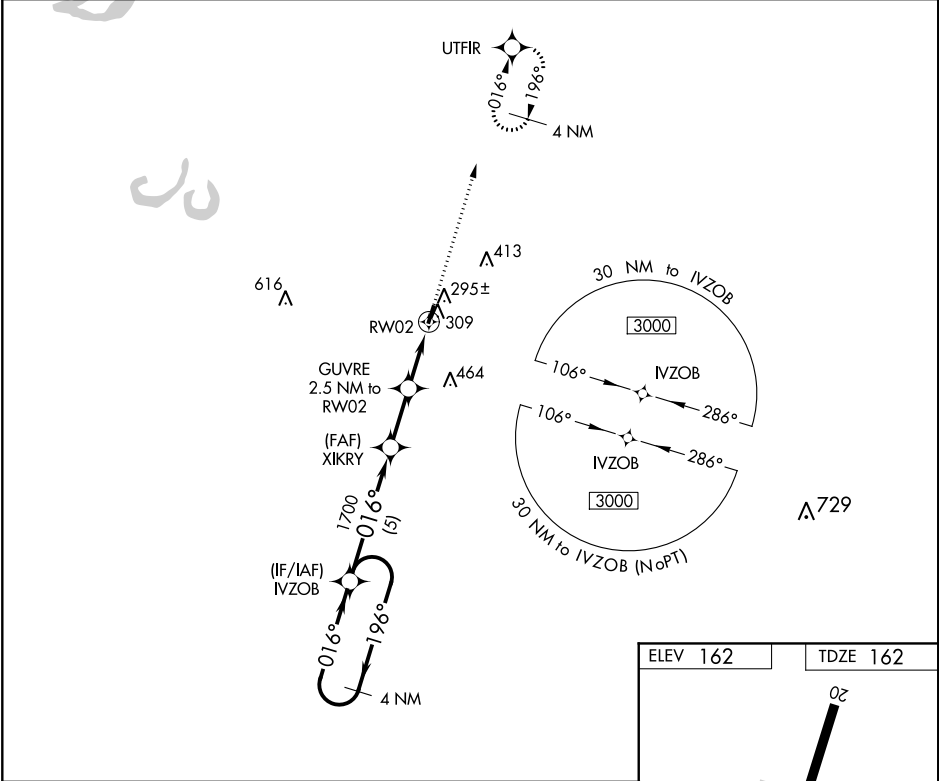


WAAS CH <b>99734</b> <b>W02A</b>	APP CRS <b>016°</b>	Rwy Idg <b>3346</b> TDZE <b>162</b> Apt Elev <b>162</b>
--	------------------------	---

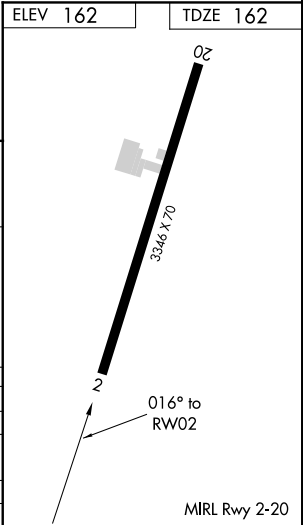
RNAV (GPS) RWY 2  
SELF5 (MMS)

<p><b>NA</b></p> <p>Circling to Rwy 20 NA at night. Baro-VNAV NA. DME/DME RNP-0.3 NA. Use Clarksdale altimeter setting; when not received, use Tunica altimeter setting and increase all DA 39 feet and all MDA 40 feet; increase LPV all Cats visibility to 1½ mile and LNAV/VNAV all Cats visibility to 1½ mile.</p>	<p><b>MISSED APPROACH:</b> Climb to 3000 direct UTFIR and hold, continue climb-in-hold to 3000.</p>
--	---

CKM AWOS-3 <b>120.675</b>	MEMPHIS CENTER <b>135.3 335.8</b>	CTAF <b>122.9</b>
------------------------------	--------------------------------------	----------------------



<p>4 NM Holding Pattern IVZOB</p> <p>3000 ← 196° 016° → 1700</p> <p>GP 3.00° TCH 40</p> <p>XIKRY 1700</p> <p>GUVRE 2.5 NM to RW02</p> <p>RW02</p> <p>*980</p> <p>5 NM 2.2 NM 2.5 NM</p>				
<p>3000 UTFIR</p> <p>*LNAV only.</p>				
CATEGORY	A	B	C	D
LPV DA	441-1	279 (300-1)		NA
LNAV/VNAV DA	608-1½	446 (500-1½)		NA
LNAV MDA	600-1	438 (500-1)		NA
<b>CIRCLING</b>	680-1	518 (600-1)		NA



SC-4, 31 DEC 2020 to 28 JAN 2021

SC-4, 31 DEC 2020 to 28 JAN 2021