

WAAS CH 50419 W18A	APP CRS 180°	Rwy Idg 4171 TDZE 333 Apt Elev 333
--	------------------------	---

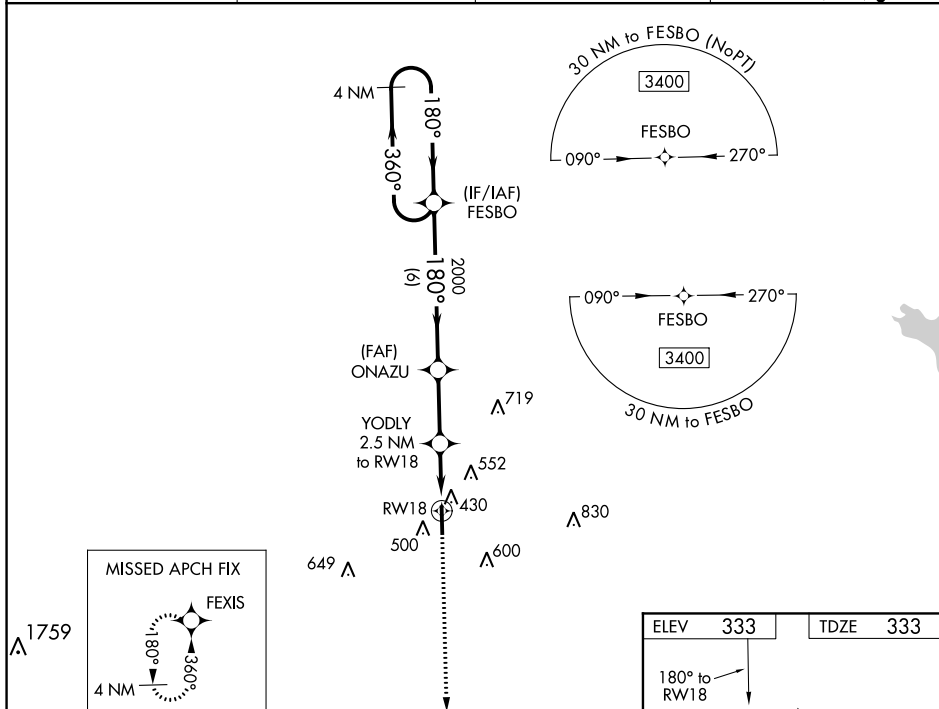
RNAV (GPS) RWY 18
GEORGE M BRYAN (STF)

RNP APCH.

Baro-VNAV and VDP NA when using Golden Triangle Rgnl altimeter setting. Rwy 18 helicopter visibility reduction below $\frac{3}{4}$ SM NA. When local altimeter setting not received, use Golden Triangle Rgnl altimeter setting and increase all DA/MDA 40 feet; increase LPV all Cats, LNAV/VNAV all Cats and LNAV Cats C/D visibility $\frac{1}{8}$ mile, increase Circling Cat C visibility $\frac{1}{4}$ mile.

MISSED APPROACH:
Climb to 3000 direct
FEXIS and hold.

AWOS-3PT 118.975	COLUMBUS APP CON ★ 135.6 323.275	CLNC DEL 126.25	UNICOM 122.7 (CTAF) 0
----------------------------	--	---------------------------	---------------------------------



CATEGORY	A B C D
LPV DA	633-1 300 (300-1)
LNAV/VNAV DA	616-1 283 (300-1)
LNAV MDA	680-1 347 (400-1)
CIRCLING	920-1 587 (600-1) 920-1½ 587 (600-1½) 1020-2¼ 687 (700-2¼)

