

APP CRS <b>058°</b>	Rwy Idg TDZE Apt Elev	<b>5005</b> <b>9</b> <b>9</b>
------------------------	-----------------------------	-------------------------------------

# RNAV (GPS) RWY 6

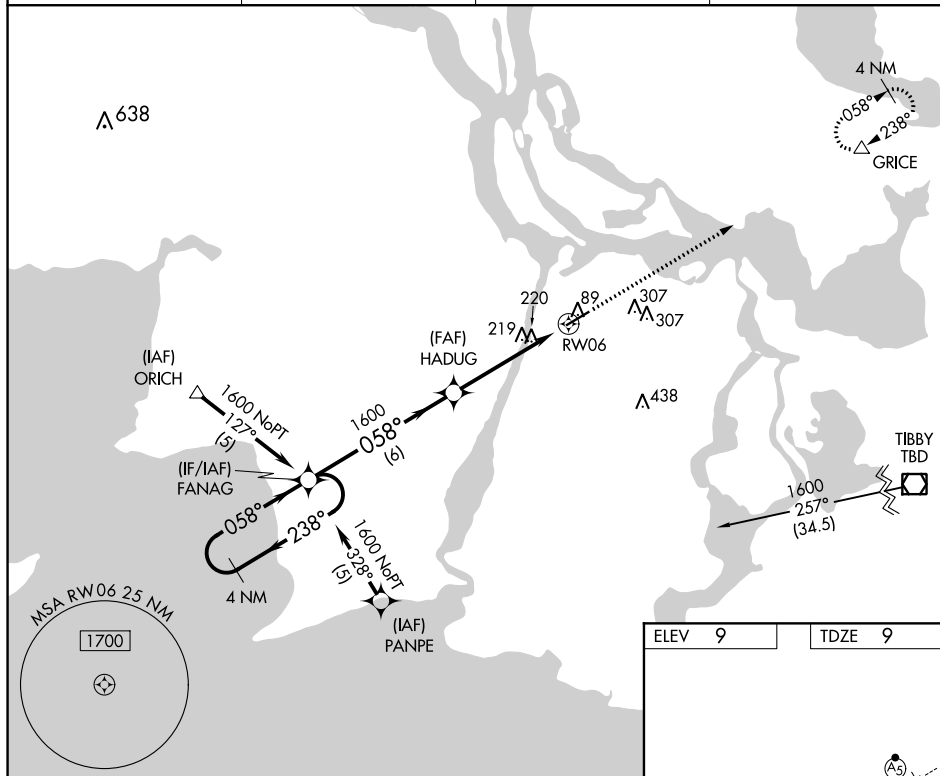
## HARRY P WILLIAMS MEMORIAL (PTN)

RNP APCH

- T** Circling NA to Rwy 4W and 22W. Rwy 6 helicopter visibility reduction below 1 SM NA.  
**A** When local altimeter setting not received, use New Iberia altimeter setting and increase all MDA 100 feet; increase LNAV Cat C visibility  $\frac{1}{4}$  mile and Circling Cat C visibility  $\frac{1}{2}$  mile. When VGSJ inop, Straight-in/Circling Rwy 6 procedure NA at night.

**MISSED APPROACH:** Climb to 1700 direct GRICE and hold.

AWOS-3PT <b>134.575</b>	NEW ORLEANS APP CON <b>124.3 350.35</b>	CLNC DEL <b>124.3</b>	UNICOM <b>122.8 (CTAF) 0</b>
----------------------------	--	--------------------------	---------------------------------



ELEV 9	TDZE 9
--------	--------

