

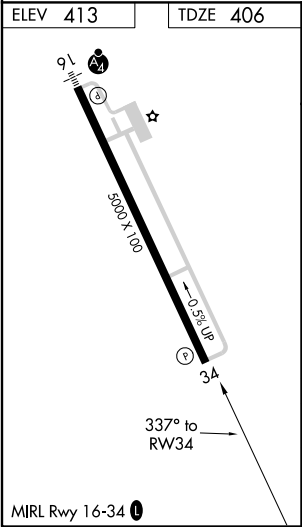
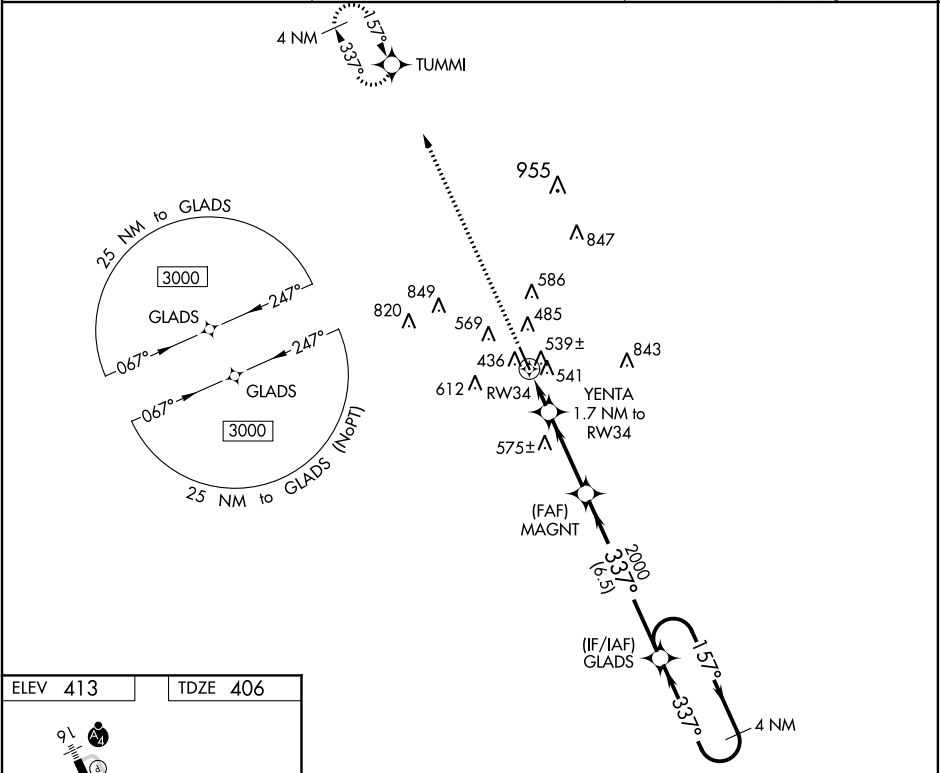
RNP APCH.
For uncompensated Baro-VNAV systems, LNAV/VNAV NA below -4°C (25°F)
or above 54°C (130°F).

MISSED APPROACH: Climb to 3000 direct TUMMI and hold.

ASOS
119,025

HOUSTON CENTER
126.8 327.8

UNICOM
123.05 (CTAF) 0



| | | | | |
|--------------|----------------------|--|------------------------------|-------------------------------|
| 3000 | TUMMI | VGSi and RNAV glidepath not coincident (VGSi Angle 3.00/TCH 40). | | 4 NM |
| | | | | Holding Pattern |
| *LNAV only | YENTA 1.7 NM to RW34 | MAGNT | 2000 | 3000 |
| | *1.2 NM to RW34 | | 2000 | GP 3.00° TCH 50 |
| | | | | |
| | 1.2 NM | 0.5 | 3.2 NM | 6.5 NM |
| CATEGORY | A | B | C | D |
| LPV DA | | 606-3/4 | 200 (200-3/4) | |
| LNAV/VNAV DA | | 739-1 | 333 (400-1) | |
| LNAV MDA | 800-1 | 394 (400-1) | 800-1 1/8 | 394 (400-1 1/8) |
| CIRCLING | 880-1 | 467 (500-1) | 940-1 1/2 527 (600-1 1/2) | 1160-2 1/2 747 (800-2 1/2) |