

WAAS CH 58224 W18A	APP CRS 182°	Rwy Idg TDZE 23 Apt Elev 23	8497
--	------------------------	---	-------------

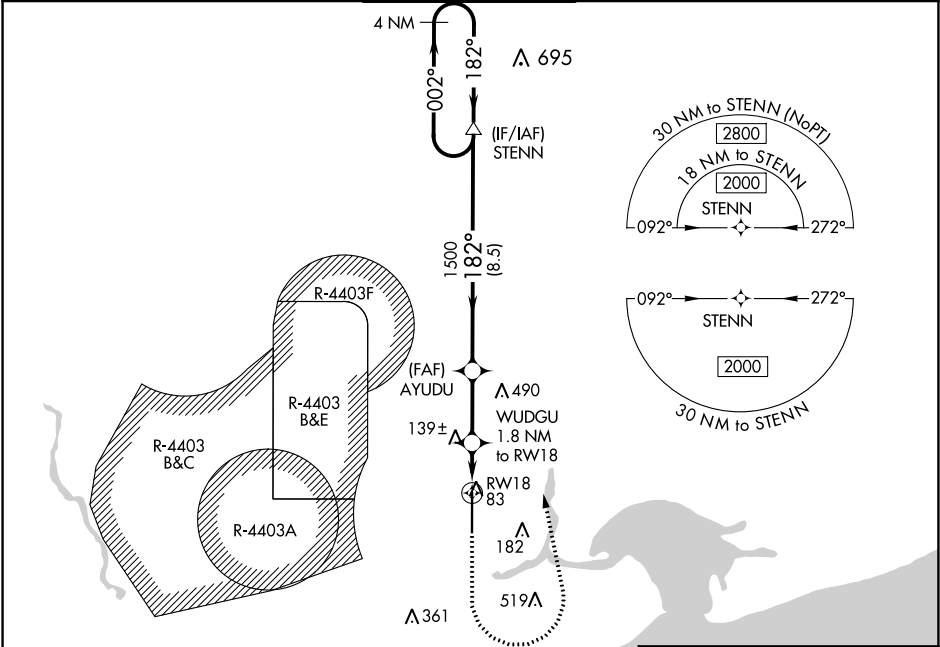
RNAV (GPS) RWY 18
STENNIS INTL (HSA)

⚠ For uncompensated Baro-VNAV systems, LNAV/VNAV NA below -15°C (5°F) or above 54°C (130°F). Circling NA for Cat E west of Rwy 18-36. Baro-VNAV and VDP NA when using Gulfport altimeter setting. DME/DME RNP-0.3 NA. When local altimeter setting not received, use Gulfport altimeter setting: increase LPV DA to 247 feet; increase LNAV/VNAV DA to 373 feet; increase all MDA 60 feet and LNAV Cats C/D/E visibility 1/8 mile, and Circling Cats D/E visibility 1/4 mile. For inop MALSR, increase LNAV Cats C/D/E visibility to 1 mile. For inop MALSR when using Gulfport altimeter setting, increase LNAV Cat E visibility to 1 1/4 mile.

MALSR
A5

MISSED APPROACH:
Climb to 1400, then
climbing left turn to
2000 direct STENN
and hold.

AWOS-3PT 118.375	GULFPORT APP CON★ 124.6 354.1	STENNIS TOWER★ 127.15 (CTAF) ①	GND CON 121.725	UNICOM 122.95
----------------------------	---	--	---------------------------	-------------------------



ELEV 23

TDZE 23

4 NM Holding Pattern

VGSI and RNAV glidepath not coincident (VGSI Angle 3.00/TCH 53).

GP 3.00° TCH 56

1500

182°

002°

2000

AYUDU

WUDGU 1.8 NM to RW18

1 NM to RW18*

RW18

* LNAV only.

8.5 NM

2.7 NM

0.8 NM

1 NM

CATEGORY	A	B	C	D	E
LPV DA	223-1/2 200 (200-1/2)				
LNAV/VNAV DA	326-1/2 303 (400-1/2)				
LNAV MDA	400-1/2	377 (400-1/2)	400-5/8 377 (400-5/8)		
CIRCLING	480-1	457 (500-1)	520-1 1/2 497 (500-1 1/2)	820-2 1/2 797 (800-2 1/2)	820-2 3/4 797 (800-2 3/4)

REIL Rwy 36 ①

HIRL Rwy 18-36 ①

182° to RW18

81

150

8497

TWR

36

SC-4, 31 DEC 2020 to 28 JAN 2021

SC-4, 31 DEC 2020 to 28 JAN 2021