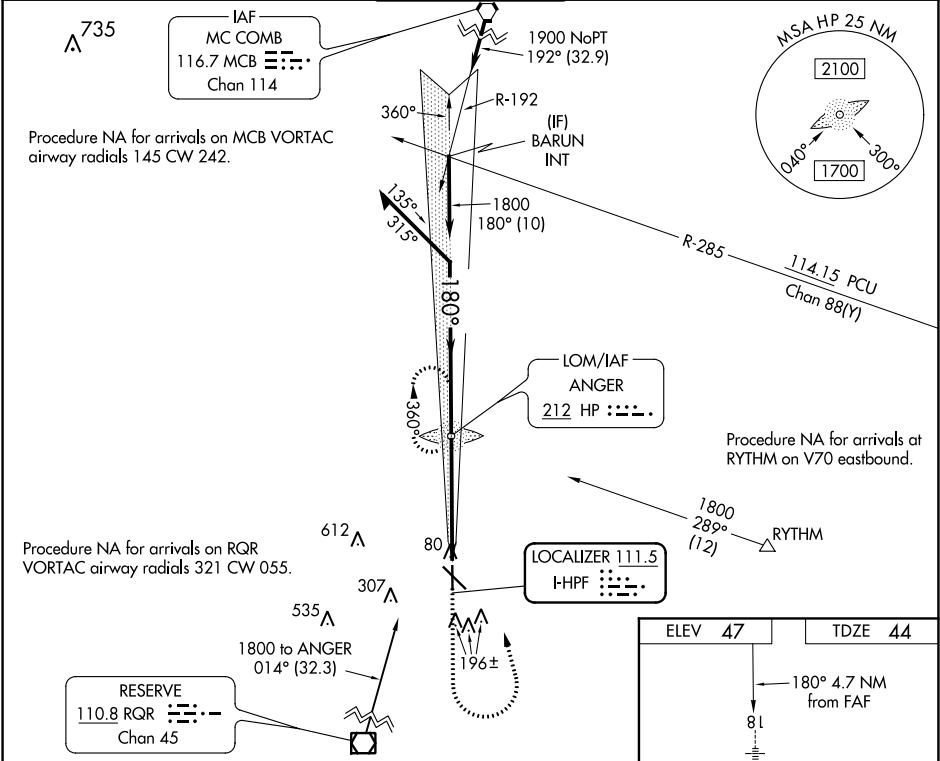


LOC I-HPF 111.5	APP CRS 180°	Rwy Idg 5001 TDZE 44 Apt Elev 47
---------------------------	------------------------	---

ILS or LOC RWY 18
HAMMOND NORTHSORE RGNL (HDC)

ADF required.	MALSR	MISSED APPROACH: Climb to 1800 then left turn on 345° bearing to ANGER LOM and hold.
NA For inop ALS, increase S-LOC 18 Cat C/D visibility to 1½ SM.		

ATIS 118.325	NEW ORLEANS APP CON 119.3 350.35	HAMMOND TOWER ★ 120.575 (CTAF) 0	GND CON 119.85	CLNC DEL 119.3 (When twr closed)
------------------------	--	--	--------------------------	---



Remain within 10 NM	HP LOM ANGER	1800	345° brg	ANGER
GS 3.00° TCH 52	1800	1800	1800	1800
CATEGORY	A	B	C	D
S-ILS 18	244-½	200 (200-½)		
S-LOC 18	540-½	496 (500-½)	540-1	496 (500-1)
CIRCLING	540-1	493 (500-1)	620-1½ 573 (600-1½)	920-2¾ 873 (900-2¾)