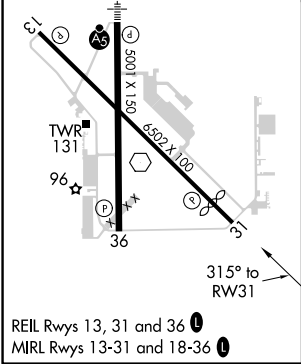
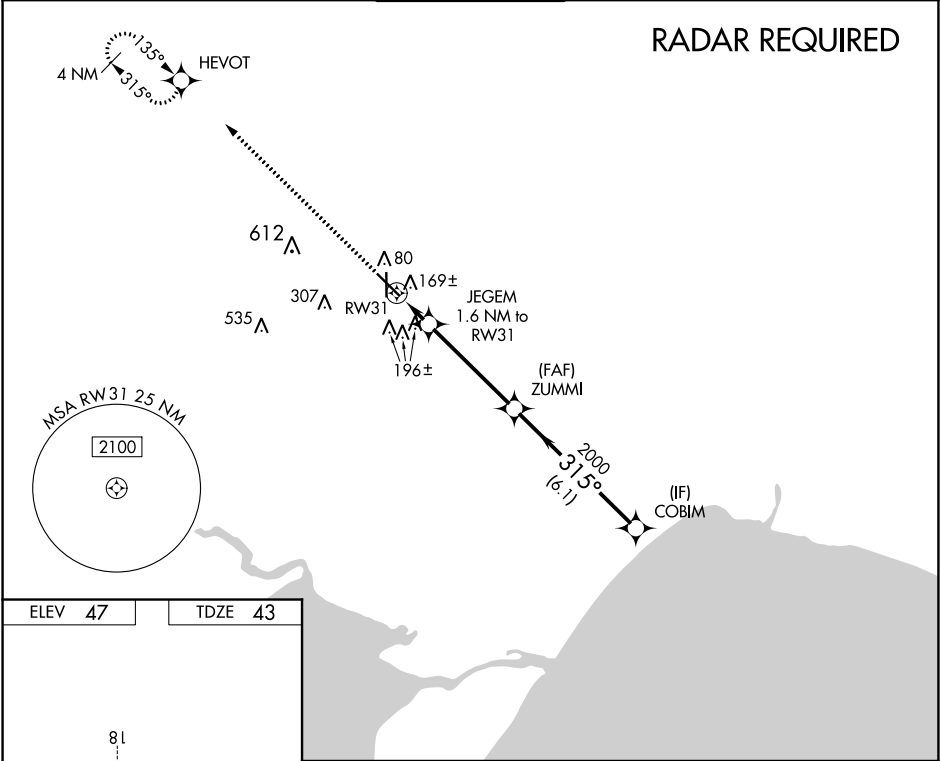


APP CRS	Rwy Idg	5812
315°	TDZE	43
	Apt Elev	47

RNAV (GPS) RWY 31  
HAMMOND NORTHSORE RGNL (HDC)

<p><b>▼</b> DME/DME RNP-0.3 NA. Visibility reduction by helicopters NA. <b>▲</b> When local altimeter setting not received, use Louis Armstrong New Orleans Intl altimeter setting and increase all MDA 100 feet, and increase LNAV Cat C and Circling Cat D visibility ¼ mile and LNAV Cat D visibility ½ mile. VDP NA with Louis Armstrong New Orleans Intl altimeter setting.</p>	<p>MISSED APPROACH: Climb to 2000 direct HEVOT and hold.</p>
--	--

ATIS <b>118.325</b>	NEW ORLEANS APP CON <b>119.3 350.35</b>	HAMMOND TOWER ★ <b>120.575</b> (CTAF) <b>0</b>	GND CON <b>119.85</b>	CLNC DEL <b>119.3</b> (When twr closed)
------------------------	--	---	--------------------------	---



2000	HEVOT	JEGEM 1.6 NM to RW31	ZUMMI	COBIM
1.1 NM to RW31	0.5	4.3 NM	6.1 NM	
315°	2000	315°	2000	
3.05° TCH 50	VGSi and descent angles not coincident (VGSi Angle 3.30/TCH 50).			
CATEGORY	A	B	C	D
LNAV MDA	460-1	417 (500-1)	460-1½	417 (500-1½)
CIRCLING	500-1	453 (500-1)	500-1½ 453 (500-1½)	620-2 573 (600-2)

SC-4, 31 DEC 2020 to 28 JAN 2021

SC-4, 31 DEC 2020 to 28 JAN 2021