

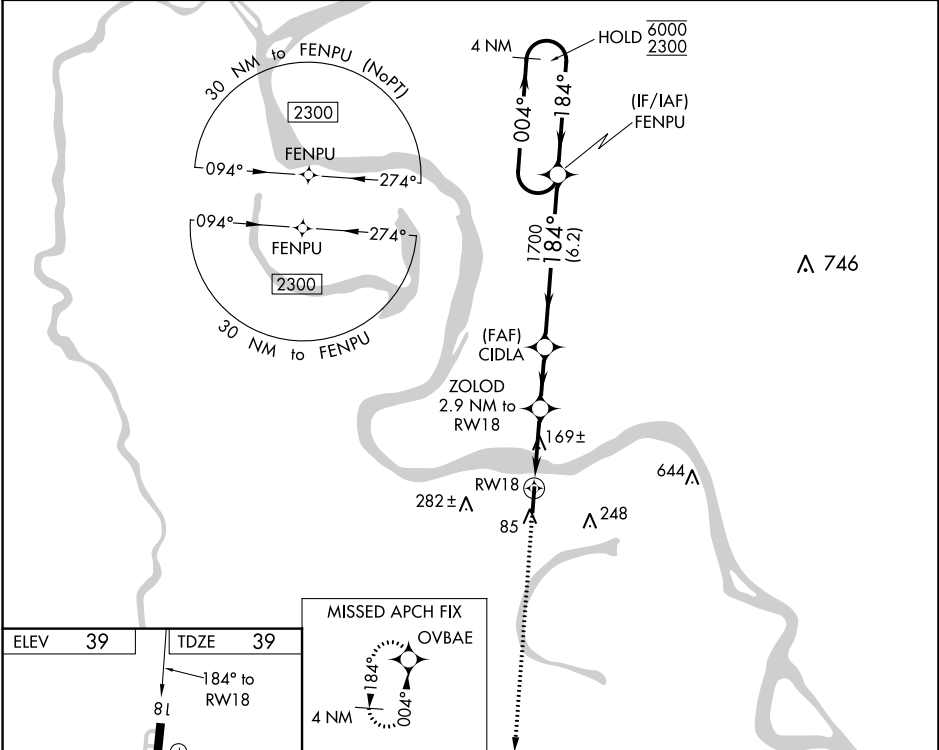
WAAS CH 86942 W18A	APP CRS 184°	Rwy Idg TDZE Apt Elev	5003 39 39
--	------------------------	-----------------------------	---------------------------------------

RNAV (GPS) RWY 18
FALSE RIVER RGNL (HZR)

RNP APCH.

<p>▼ Rwy 18 helicopter visibility reduction below ¾ SM NA. When local altimeter setting not received, use Baton Rouge altimeter setting and increase all DA 51 feet and all visibility ⅛ SM; increase all MDA 60 feet, and LNAV Cat C/D and Circling Cat C visibility ¼ SM. For uncompensated Baro-VNAV systems, LNAV/VNAV NA below -15°C or above 54°C. Baro-VNAV and VDP NA when using Baton Rouge altimeter setting.</p>	MISSED APPROACH: Climb to 2100 direct OVBAE and hold.
---	---

AWOS-3PT 121.250	BATON ROUGE APP CON★ 120.3 278.3	UNICOM 122.8 (CTAF) 0
----------------------------	--	---------------------------------



ELEV 39	TDZE 39
<p>184° to RW18</p> <p>81</p> <p>5003 x 75</p> <p>36</p> <p>MIRL Rwy 18-36 0</p> <p>REIL Rwy 18 0</p>	
<p>MISSED APCH FIX</p> <p>OVBAE</p> <p>4 NM</p> <p>2100</p> <p>OVBAE</p> <p>*LNAV only.</p> <p>*1 NM to RW18</p> <p>ZOLOD 2.9 NM to RW18</p> <p>CIDLA 1700</p> <p>FENPU 4 NM Holding Pattern</p> <p>004° 6000</p> <p>184° 2300</p> <p>1000*</p> <p>1700</p> <p>GP 3.00° TCH 50</p> <p>1 NM 1.9 NM 2.2 NM 6.2 NM</p>	
CATEGORY	A B C D
LPV DA	347-7/8 308 (400-7/8)
LNAV/VNAV DA	317-7/8 278 (300-7/8)
LNAV MDA	420-1 381 (400-1) 420-1½ 381 (400-1½)
CIRCLING	480-1 441 (500-1) 520-1 481 (500-1) 600-1½ 561 (600-1½) 600-2 561 (600-2)

SC-4, 31 DEC 2020 to 28 JAN 2021

SC-4, 31 DEC 2020 to 28 JAN 2021