

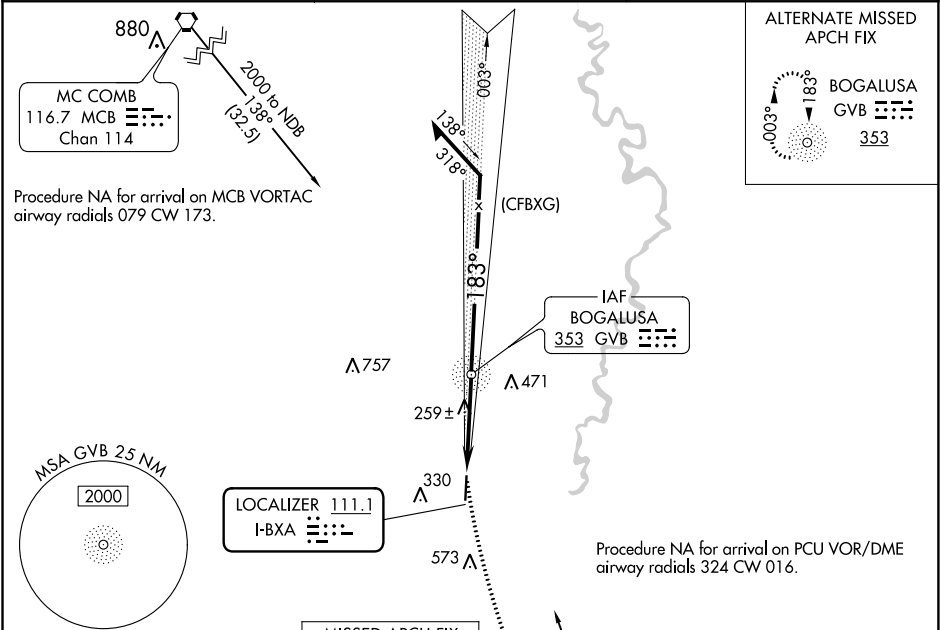
LOC I-BXA 111.1	APP CRS 183°	Rwy Idg TDZE Apt Elev	5002 119 119
---------------------------	------------------------	-----------------------------	---

LOC RWY 18

GEORGE R CARR MEMORIAL AIR FIELD (BXA)

ADF required NA	MISSED APPROACH: Climbing left turn to 2000 direct PCU VOR/DME and hold.
--------------------	--

AWOS-3PT 118.025	HOUSTON CENTER 126.8 327.8	UNICOM 122.8 (CTAF) 0
----------------------------	--------------------------------------	---------------------------------



ELEV 119	TDZE 119
183° 3.7 NM from FAF	81
5002 X 100	36
REIL Rwy 18 and 36	MIRL Rwy 18-36
FAF to MAP 3.7 NM	
Knots	60 90 120 150 180
Min:Sec	3:42 2:28 1:51 1:29 1:14

MISSED APCH FIX				
PICAYUNE PCU 114.15 Chan 88 (Y)				
2000	PCU	GVB NDB	Remain within 10 NM	
		1500	VGSi and descent angles not coincident (VGSi Angle 3.00/TCH 50).	
CATEGORY	A	B	C	D
S-18	520-1	401 (500-1)	520-1 $\frac{1}{8}$ 401 (500-1 $\frac{1}{8}$)	NA
CIRCLING	620-1 501 (600-1)	640-1 521 (600-1)	720-1 $\frac{3}{4}$ 601 (700-1 $\frac{3}{4}$)	NA

LOC RWY 18

SC-4, 31 DEC 2020 to 28 JAN 2021

SC-4, 31 DEC 2020 to 28 JAN 2021