

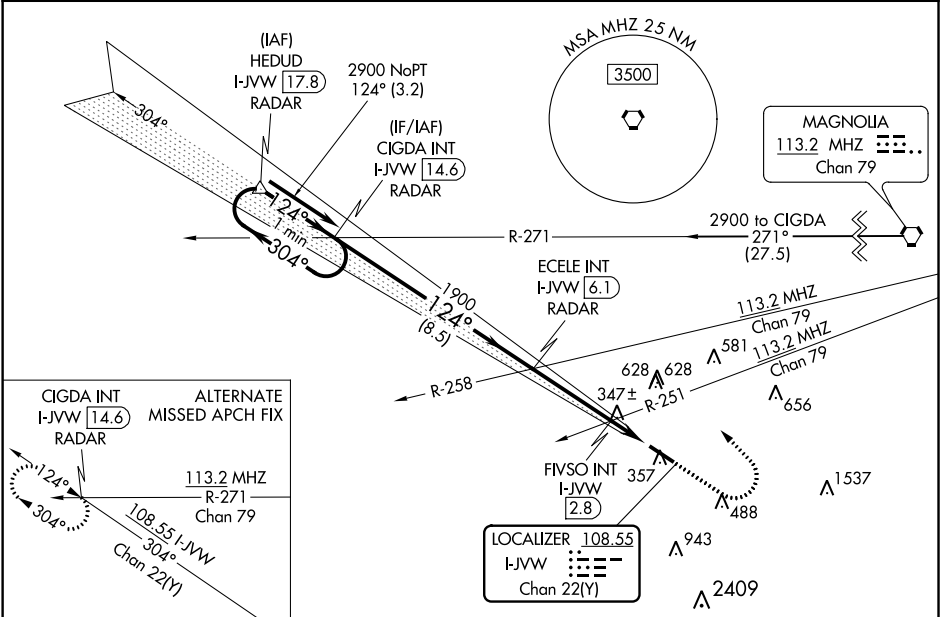
LOC/DME I-JVW	APP CRS	Rwy Idg	5499
108.55	124°	TDZE	241
Chan 22(Y)		Apt Elev	247

ILS or LOC RWY 12  
JOHN BELL WILLIAMS (JVW)

**⚠** VDP NA with Hawkins Field altimeter setting. Circling NA for Cat D southwest of Rwy 12-30. When local altimeter setting not received, use Hawkins Field altimeter setting: increase all DA 36 feet, all MDA 40 feet, S-LOC 12 Cat C and D visibilities ¼ mile, and Circling Cat C and D visibilities ¼ mile, increase FIVSO fix minimums S-LOC 12 Cat C and D visibilities ¼ mile and Circling Cat C and D visibilities ¼ mile.

**⚠** MISSED APPROACH: Climb to 800 then climbing left turn to 2900 on heading 316° and on 113.2 MHz VORTAC R-271 to CIGDA INT/I-JVW 14.6 DME and hold.

AWOS-3PT 118.675	JACKSON APP CON ★ 125.25 319.2	UNICOM 123.0 (CTAF) 0
---------------------	-----------------------------------	--------------------------



One Minute Holding Pattern		CIGDA INT I-JVW 14.6		ECELE INT I-JVW 6.1		800		2900		hdg 316°		MHZ R-271		CIGDA INT		ELEV 247		TDZE 241										
2900		← 304°		124°		124°		1900		*I-JVW 2.3		*I-JVW 1.1		*LOC only		124° 5.1 NM from FAF												
GS 3.00° TCH 47		*800 when using Hawkins Field altimeter setting.																										
VGSI and ILS glidepath not coincident (VGSI Angle 3.00/TCH 38).		*I-JVW 2.8																										
8.5 NM		3.4		0.5		1.2																						
CATEGORY		A		B		C													D									
S-ILS 12		441-3/4 200 (200-3/4)																										
S-LOC 12		760-1		519 (600-1)		760-1 3/8													519 (600-1 3/8)									
CIRCLING		800-1		553 (600-1)		980-2													980-2 1/4									
						733 (800-2)													733 (800-2 1/4)									
FIVSO FIX MINIMUMS (DUAL VOR RECEIVERS OR DME REQUIRED)																												
S-LOC 12		660-1		419 (500-1)		660-1 1/8													419 (500-1 1/8)									
CIRCLING		800-1		553 (600-1)		980-2													980-2 1/4									
						733 (800-2)													733 (800-2 1/4)									
MIRL Rwy 12-30 0																												
REIL Rwy 12 and 30 0																												
FAF to MAP 5.1 NM																												
Knots		60		90		120		150		180																		
Min:Sec		5:06		3:24		2:33		2:02		1:42																		

SC-4, 31 DEC 2020 to 28 JAN 2021

SC-4, 31 DEC 2020 to 28 JAN 2021