

WAAS CH 78034 W30A	APP CRS 304°	Rwy Idg TDZE Apt Elev	5499 247 247
--	------------------------	-----------------------------	---

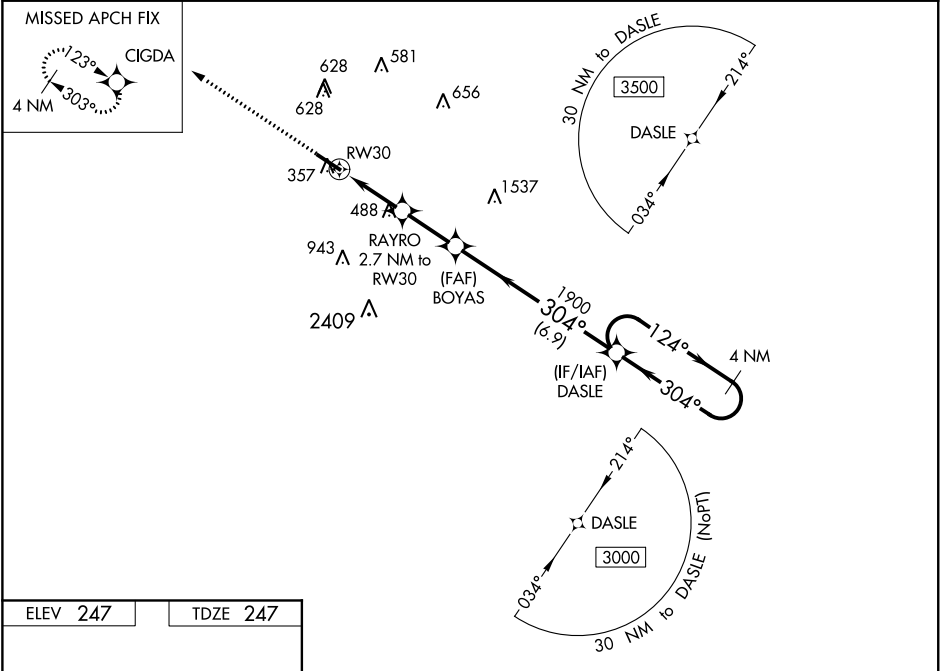
RNAV (GPS) RWY 30

JOHN BELL WILLIAMS (JVW)

For uncompensated Baro-VNAV systems, LNAV/VNAV NA below -15°C (5°F) or above 54°C (130°F). DME/DME RNP-0.3 NA. Circling NA for Cat D southwest of Rwy 12-30. Helicopter visibility reduction below ¾ SM NA. When local altimeter setting not received, use Hawkins Field altimeter setting increase all DA/MDA 40 feet, increase LPV and LNAV/VNAV all Cats visibility and LNAV Cat C/D visibility ⅓ mile, increase Circling Cat C visibility ¼ mile. Baro-VNAV and VDP NA when using Hawkins Field altimeter setting.

MISSED APPROACH:
Climb to 2900 direct
CIGDA and hold.

AWOS-3PT 118,675	JACKSON APP CON★ 125,25 319.2	UNICOM 123.0 (CTAF) 0
----------------------------	---	---------------------------------



ELEV 247

TDZE 247

2900 CIGDA

VGSI and RNAV glidepath not coincident
(VGSI Angle 4.00/TCH 50).

*LNAV only

RAYRO 2.7 NM to RWY 30

BOYAS 1900

DASLE 4 NM Holding Pattern

124° 3000

GP 3.03° TCH 53

CATEGORY	A	B	C	D
LPV DA	513-7⁄8 266 (300-7⁄8)			
LNAV/VNAV DA	699-1½ 452 (500-1½)			
LNAV MDA	740-1 493 (500-1)	740-1 493 (500-1)	740-1 493 (500-1)	740-1 493 (500-1)
CIRCLING	740-1 493 (500-1)	760-1 513 (600-1)	980-2 733 (800-2)	980-2 733 (800-2)