

WAAS CH 86711 W15A	APP CRS 146°	Rwy Idg TDZE Apt Elev	5001 10 10
--	------------------------	-----------------------------	---------------------------------------

RNAV (GPS) RWY 15

SOUTHLAND FIELD (UXL)

⚠

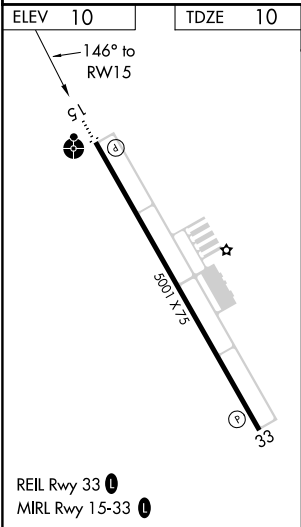
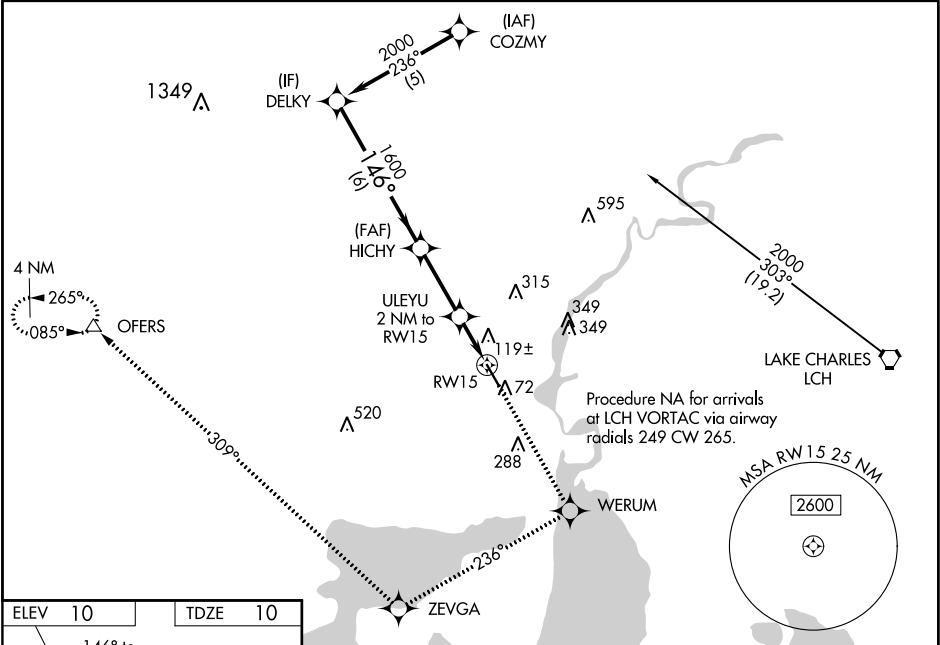
⚠

Inoperative table does not apply to LNAV/VNAV. Baro-VNAV NA when using Lake Charles Rgnl altimeter setting. For uncompensated Baro-VNAV systems, LNAV/VNAV NA below -15°C (3°F) or above 48°C (118°F). DME/DME RNP-0.3 NA. Visibility reduction by helicopters NA. When local altimeter setting not received, use Lake Charles Rgnl altimeter setting and increase all DA 19 feet, all MDA 20 feet and LPV visibility ½ mile all Cats. VDP NA when using Lake Charles Rgnl altimeter setting.

ODALS

MISSED APPROACH: Climb to 2500 direct WERUM and via 236° track to ZEVGA and via 309° track to OFERS and hold.

AWOS-3PT 118.175	LAKE CHARLES APP CON ★ 119.35 282.3	UNICOM 122.8 (CTAF) 0
----------------------------	---	---------------------------------



Procedure Turn NA		2500 ↑		WERUM ✱		tr 236° ✱		ZEVGA ✱		tr 309° ✱		OFERS △	
DELKY												*LNAV only	
2000													
GP 3.00° TCH 40													
VGSi and RNAV glidepath not coincident (VGSi Angle 3.00/TCH 50).													
		HICHY		ULEYU 2 NM to RW15		*1.1 NM to RW15		RW15					
		146°		1600		*680							
		6 NM		2.8 NM		0.9		1.1					
CATEGORY	A	B	C	D									
LPV DA	309-1		299 (300-1)										
LNAV/VNAV DA	419-1½		409 (500-1½)										
LNAV MDA	380-¾		370 (400-¾)		380-1¼		370 (400-1¼)						
CIRCLING	420-1 410 (500-1)	520-1 510 (600-1)	520-1½ 510 (600-1½)	640-2 630 (700-2)									