

WAAS  
CH **87121**  
**W18A**

APP CRS  
**177°**

Rwy Idg  
TDZE **297**  
Apt Elev **311**

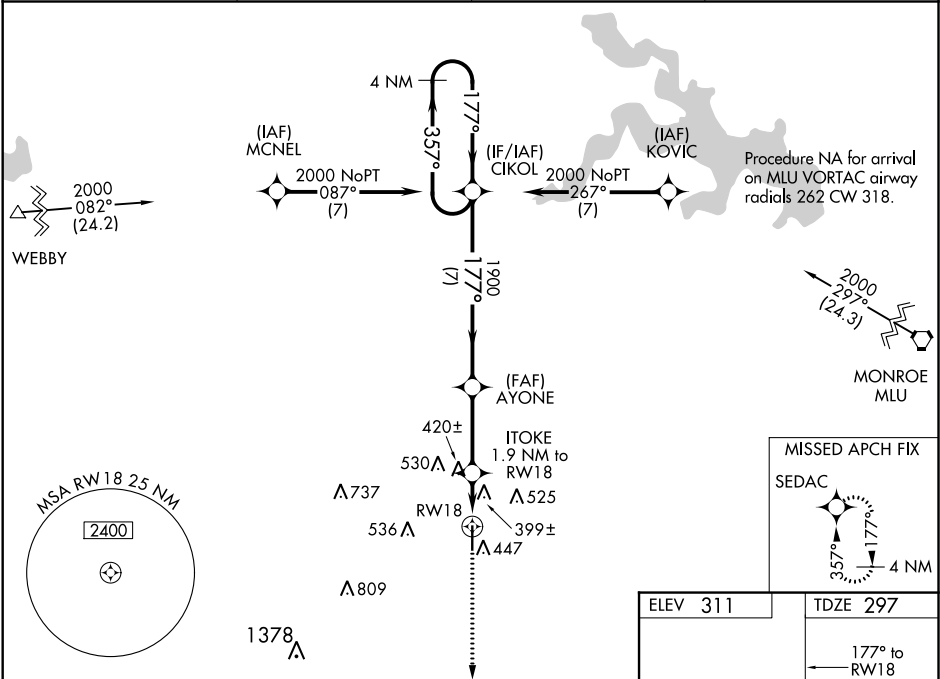
**RNAV (GPS) RWY 18**  
RUSTON RGNL (RSN)

▼  
▲

Baro-VNAV NA when using Monroe altimeter setting. For uncompensated Baro-VNAV systems, LNAV/VNAV NA below -15°C (5°F) or above 42°C (107°F). Rwy 18 helicopter visibility reduction below ¾ SM NA. VDP NA with Monroe altimeter setting. When local altimeter setting not received, use Monroe altimeter setting and increase all DA 97 feet and all MDA 100 feet; increase LPV all Cats, LNAV/VNAV all Cats and LNAV Cat C and D visibility ¼ mile.

MISSED APPROACH:  
Climb to 2200 direct  
SEDAC and hold.

AWOS-3PT <b>119.525</b>	MONROE APP CON * <b>126.9 307.9</b>	CLNC DEL <b>118.8</b>	UNICOM <b>122.7 (CTAF) 0</b>
----------------------------	--	--------------------------	---------------------------------



4 NM Holding Pattern		2200 SEDAC	
2000 ← 357° 177° →		* LNAV only.	
GP 3.00° TCH 40		* 920	
7 NM		3.1	
0.8		1.1	
CATEGORY	A	B	C
LPV DA	547-7/8		250 (300-7/8)
LNAV/VNAV DA	723-1 1/2		426 (500-1 1/2)
LNAV MDA	680-1	383 (400-1)	680-1 1/8 383 (400-1 1/8)
CIRCLING	760-1 449 (500-1)	780-1 469 (500-1)	780-1 1/2 469 (500-1 1/2) 880-2 569 (600-2)

ELEV 311

TDZE 297

177° to RWY 18

81

0.2% UP

5000 X 100

36

MIRL Rwy 18-36 0  
REIL Rws 18 and 36 0