

WAAS CH 99310 W18B	APP CRS 179°	Rwy Idg TDZE 55 Apt Elev 55
--	------------------------	---

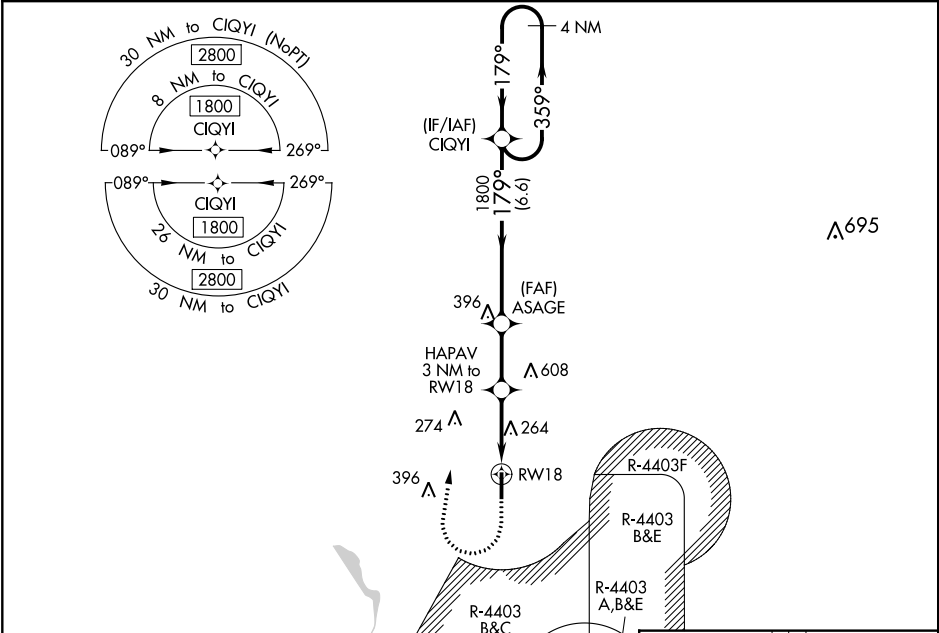
RNAV (GPS) Z RWY 18

PICAYUNE MUNI (MJD)

For uncompensated Baro-VNAV systems, LNAV/VNAV NA below -15°C (5°F) or above 54°C (130°F).
Baro-VNAV and VDP NA when using Stennis Intl altimeter setting. DME/DME RNP-0.3 NA.
Helicopter visibility reduction below 3/4 SM NA. Procedure NA when R-4403 B, C, or E is active.
When local altimeter setting not received, used Stennis Intl altimeter setting: increase LPV DA to 377 and visibility all Cats 1/8 mile; increase LNAV/VNAV DA to 621 and visibility all Cats 1/8 mile; increase all MDA 40 feet and Circling Cat C visibility 1/4 mile.

MISSED APPROACH:
Climb to 1200, then climbing right turn to 1800 direct CIQYI and hold.

AWOS-3PT 119.075	GULFPORT APP CON 124.6 354.1	UNICOM 122.8 (CTAF) 0
----------------------------	--	---------------------------------



		ELEV 55		TDZE 55	
4 NM Holding Pattern		CIQYI	ASAGE	HAPAV	CIQYI
1800 ← 359°		179° →	1800	1200	1800
GP 3.00°				*1.3 NM to RW18	*LNAV only.
TCH 36			*1040		
		6.6 NM	2.4 NM	1.7 NM	1.3 NM
CATEGORY	A	B	C	D	
LPV DA	343-1 288 (300-1)				
LNAV/VNAV DA	587-1 532 (600-1)				
LNAV MDA	520-1	465 (500-1)	520-1 3/8	465 (500-1 3/8)	
CIRCLING	520-1	580-1	700-1 3/4	960-3	
	465 (500-1)	525 (600-1)	645 (700-1 3/4)	905 (1000-3)	

MIRL Rwy 18-36 0