

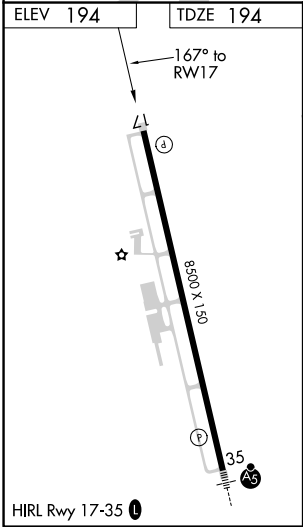
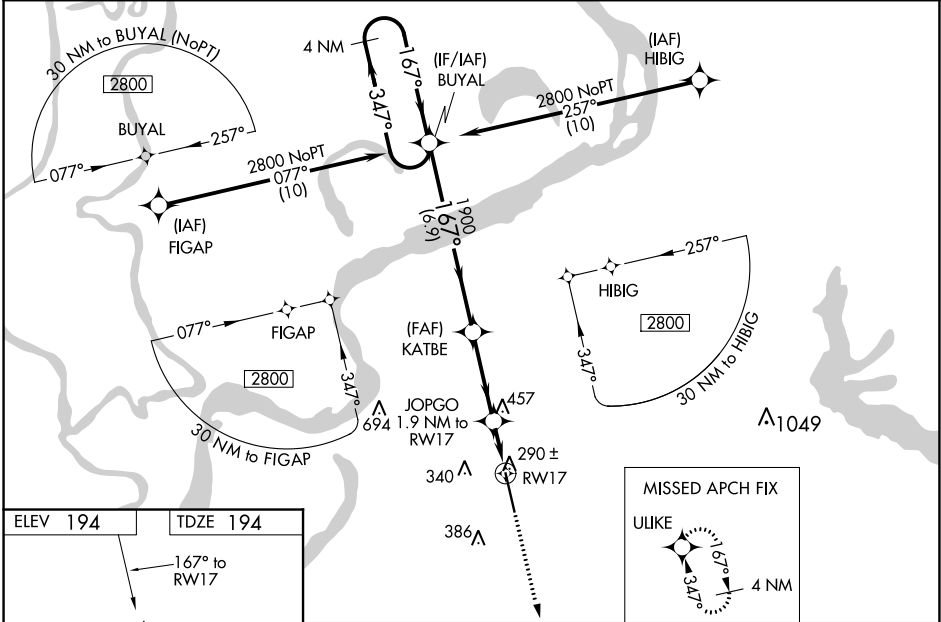
WAAS CH 56212 W17A	APP CRS 167°	Rwy Idg 8500 TDZE 194 Apt Elev 194
--	------------------------	---

AL-9521 (FAA)

RNAV (GPS) RWY 17
TUNICA MUNI (UTA)

RNP APCH.	<p>MISSED APPROACH: Climb to 2800 direct ULIKE and hold.</p>
<p>⚠ For uncompensated Baro-VNAV systems, LNAV/VNAV NA below -15°C (5°F) or above 42°C (107°F). For inop ALS, increase LNAV/VNAV visibility all Cats to ¾ SM, and LNAV Cats C, D visibility to 1¾ SM. Baro VNAV and VDP NA when using Memphis altimeter setting. When local altimeter setting not received, use Memphis altimeter setting and increase LPV DA to 480, LNAV/VNAV DA to 557, and all MDA 100 feet, increase LNAV/VNAV visibility all Cats to 1 SM, and Circling Cat C visibility to 1¾ SM. For inop ALS when using Memphis altimeter setting, increase LPV all Cats visibility to ¾ SM, LNAV/VNAV all Cats visibility to 1 SM, LNAV Cats C/D visibility to 1¾ SM.</p>	

AWOS-3 118.075	MEMPHIS APP CON 119.1 291.6	CLNC DEL 118.9	UNICOM 123.0 (CTAF) 0
--------------------------	---------------------------------------	--------------------------	---------------------------------



4 NM Holding Pattern BUYAL		KATBE		JOPGO 1.9 NM to RW17		2800	ULIKE
2800		1900		*1.2 NM to RW17		*LNAV only.	
GP 3.00° TCH 50		1900		*840			
6.9 NM		3.3 NM		0.7		1.2 NM	
CATEGORY		A		B		C	
LPV DA		394-¾		200 (200-¾)			
LNAV/VNAV DA		471-¾		277 (300-¾)			
LNAV MDA		640-¾ 446 (500-¾)		640-1⅛ 446 (500-1⅛)			
CIRCLING		680-1 486 (500-1)		700-1½ 506 (600-1½)		760-2 566 (600-2)	