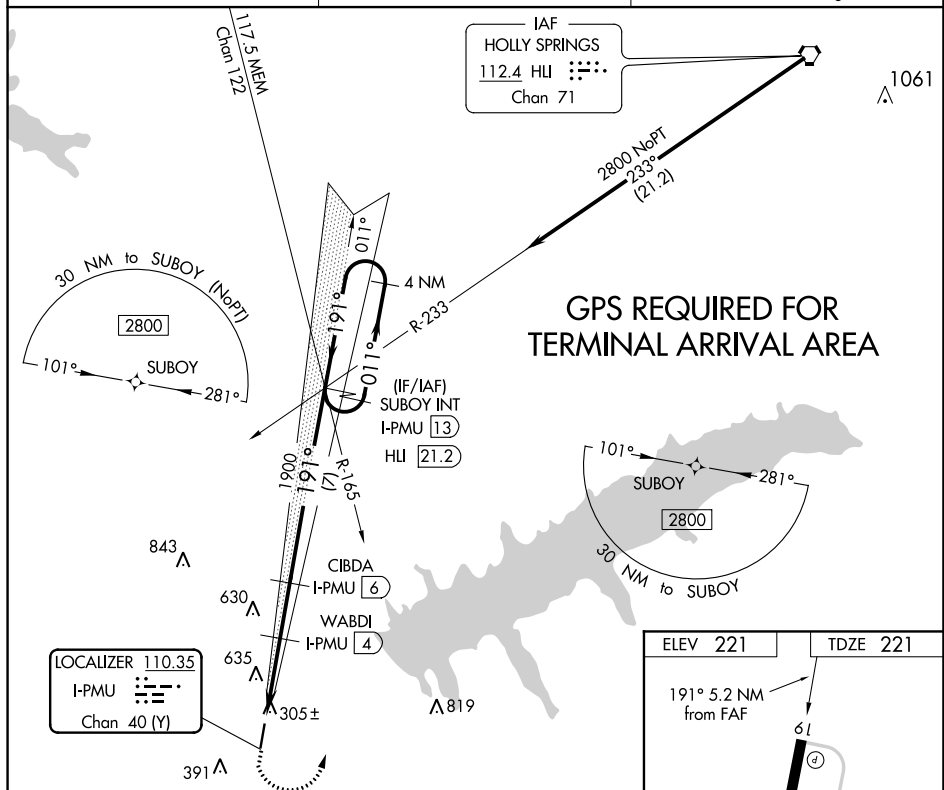
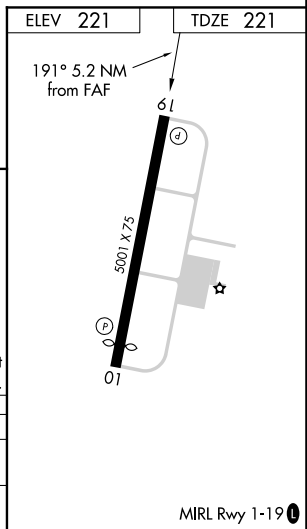


LOC RWY 19
PANOLA COUNTY (PMU)

MISSED APPROACH: Climb to 1100 then climbing left turn to 2800 on heading 015° and MEM VORTAC R-165 to SUBOY INT/13 DME and hold.

UNICOM
122.8 (CTAF) **L**

1100 ↑	2800 hdg 015°	MEM R-165	SUBOY INT	SUBOY INT I-PMU 13	4 NM Holding Pattern
CATEGORY	0.7	2.5 NM	2 NM	7 NM	
S-19	A	B	C	D	
	560-1 339 (400-1)				
CIRCLING	740-1 519 (600-1)	1000-1 779 (800-1)	1000-2¼ 779 (800-2¼)	1120-3 899 (900-3)	



SC-4, 31 DEC 2020 to 28 JAN 2021