

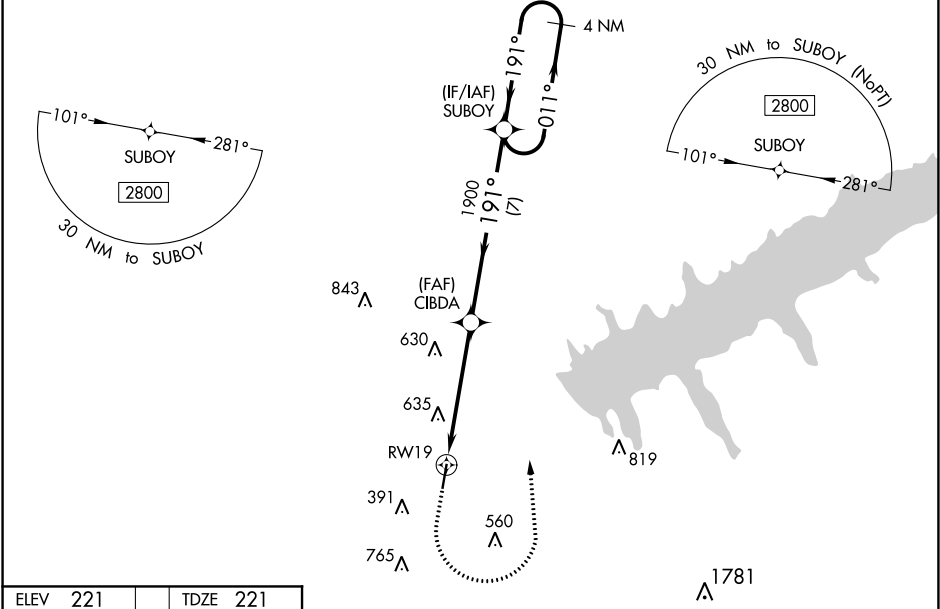
WAAS CH 72834 W19A	APP CRS 191°	Rwy Idg 5001 TDZE 221 Apt Elev 221
--	------------------------	---

RNAV (GPS) RWY 19
PANOLA COUNTY (PMU)

▼ For uncompensated Baro-VNAV systems, LNAV/VNAV NA below -15°C (5°F) or above 54°C (130°F).
▲ NA DME/DME RNP-0.3 NA. Baro-VNAV and VDP NA when using Oxford altimeter setting.
When local altimeter setting not received, use Oxford altimeter setting and increase LPV DA to 571, LNAV/VNAV DA to 1116 and all MDA 80 feet, increase LPV all Cats visibility $\frac{3}{8}$ mile, LNAV/VNAV all Cats visibility $\frac{1}{2}$ mile, LNAV Cat B visibility $\frac{1}{4}$ mile, LNAV Cats C, D visibility $\frac{1}{2}$ mile, and Circling Cats B, C visibility $\frac{1}{4}$ mile. Rwy 19 helicopter visibility reduction below $\frac{3}{4}$ SM NA.

MISSED APPROACH:
Climb to 1100 then climbing left turn to 2800 direct SUBOY and hold.

AWOS-3PT 118.225	MEMPHIS CENTER 128.5 381.4	UNICOM 122.8 (CTAF) 0
----------------------------	--------------------------------------	---------------------------------



ELEV 221 TDZE 221

191° to RW19

61

5001 X 7s

01

MIRL Rwy 1-19 0

1100	2800	SUBOY	VGSI and RNAV glidepath not coincident (VGSI Angle 4.00/TCH 45).			
*LNAV only.				SUBOY Holding Pattern		
*1.6 NM to RW19				GP 3.00° TCH 40		
CIBDA 1900				4 NM		
RW19 1900				011° → 2800		
1.6 3.6 NM 7 NM				← 191°		
CATEGORY	A	B	C	D		
LPV DA	500- $\frac{7}{8}$		279 (300- $\frac{7}{8}$)			
LNAV/VNAV DA	1045-3		824 (900-3)			
LNAV MDA	940-1 719 (800-2)		940-2 719 (800-2)			
CIRCLING	940-1 719 (800-1)		1000-1 779 (800-1)		1000-2 $\frac{1}{4}$ 779 (800-2 $\frac{1}{4}$)	
					1120-3 899 (900-3)	

SC-4, 31 DEC 2020 to 28 JAN 2021

SC-4, 31 DEC 2020 to 28 JAN 2021