
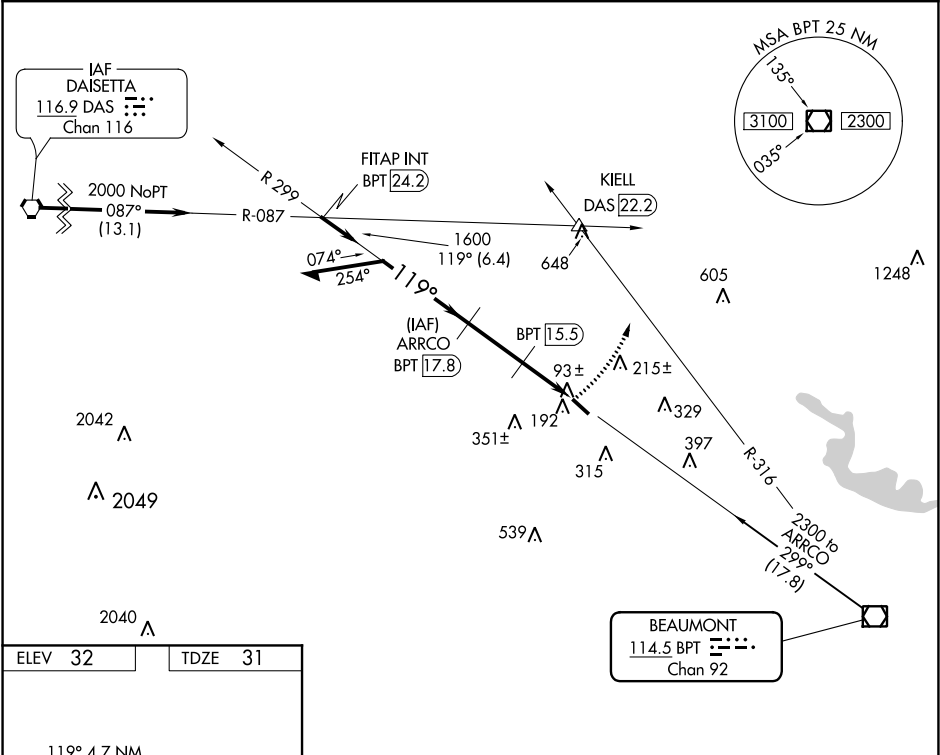


VOR/DME BPT	APP CRS	Rwy Idg	3669
114.5	119°	TDZE	31
Chan 92		Apt Elev	32

VOR/DME RWY 13  
BEAUMONT MUNI (BMT)

<div><div><div><div></div><div></div></div><div><div></div><div></div></div></div><div><div></div><div></div></div></div> <div>NA</div>	Use Beaumont-Port Arthur, TX (Jack Brooks Rgnl) altimeter setting. Circling NA Rwy 16-34. Visibility reduction by helicopters NA.	MISSED APPROACH: Climbing left turn to 2300 via BPT R-316 to KIELL INT/DAS 22.2 DME.		
AWOS-3P/T 118.425	HOUSTON APP CON 121.3 377.1	CLNC DEL 121.75	UNICOM 123.0 (CTAF) 	



ELEV 32	TDZE 31
---------	---------

