

**TOP ALTITUDE:  
ASSIGNED BY ATC**

## TAKEOFF MINIMUMS

Rwys 14, 18, 32, 36: Standard with a minimum climb of 500' per NM to 520.

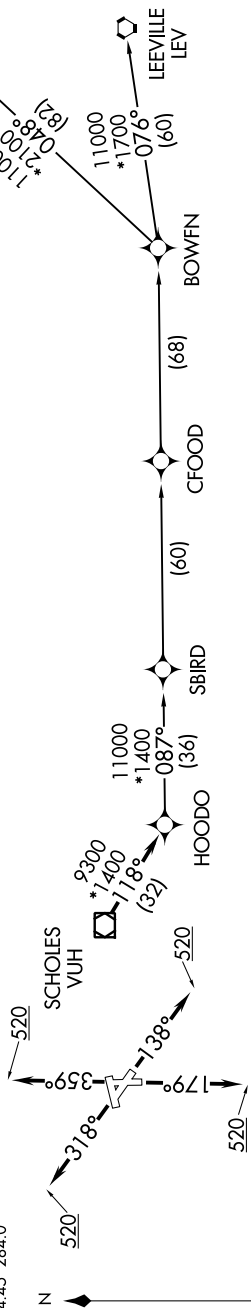
NOTE: RNAV 1.

NOTE: RADAR required.

NOTE: ATC assigned only

NOTE: DMF/DMF/IRI or GPS required

NOTE: DME/DME-T or GPS required. For non-GPS equipped aircraft, LCH, LLA, TBD, and LEV DME's must be operational.



NOTE: Chart not to scale.

## DEPARTURE ROUTE DESCRIPTION

**TAKEOFF RUNWAY 14:** Climb heading 138° to 520, for RADAR vectors to VUH VOR/DME, thence . . . .

**TAKEOFF RUNWAY 18:** Climb heading 179° to 520, for RADAR vectors to VUH VOR/DME, thence . . .

**TAKEOFF RUNWAY 32:** Climb heading 318° to 520, for RADAR vectors to VUH VOR/DME, thence . . . .

**TAKEOFF RUNWAY 36:** Climb heading 359° to 520, for RADAR vectors to VUH VOR/DME, thence . . . .

... on track 118° to HOODO, then on (transition). Maintain ATC assigned altitude. Expect filed altitude 10 minutes after departure.

BOWFN TRANSITION (HOODO6.BOWFN)

CFOOD TRANSITION (HOODO6.CFOOD)

HARVEY TRANSITION (HOODO6.HRV)

LEEVILLE TRANSITION (HOODO6.LEV)

SBIRD TRANSITION (HOODO6 SBIRD)

HOODO SIX DEPARTURE (RNAV)  
(HOODO6.HOODO) 25APR19

GALVESTON, TEXAS

SCHOLLS INTL AT GALVESTON (GLS)