

HI-ILS Y or LOC Y RWY 17R

LOC I-LPV 110.3	APCH CRS 174°	Rwy ldg TDZE Arprt Elev 9001 32 33
---------------------------	-------------------------	--

JAL-197 [USAF]

HOUSTON/ELLINGTON (KEFD)

- ▼ * When ALS inop, increase CAT CDE vis to 1½ miles.
 ** Circling not authorized W of Rwy 17R-35L.

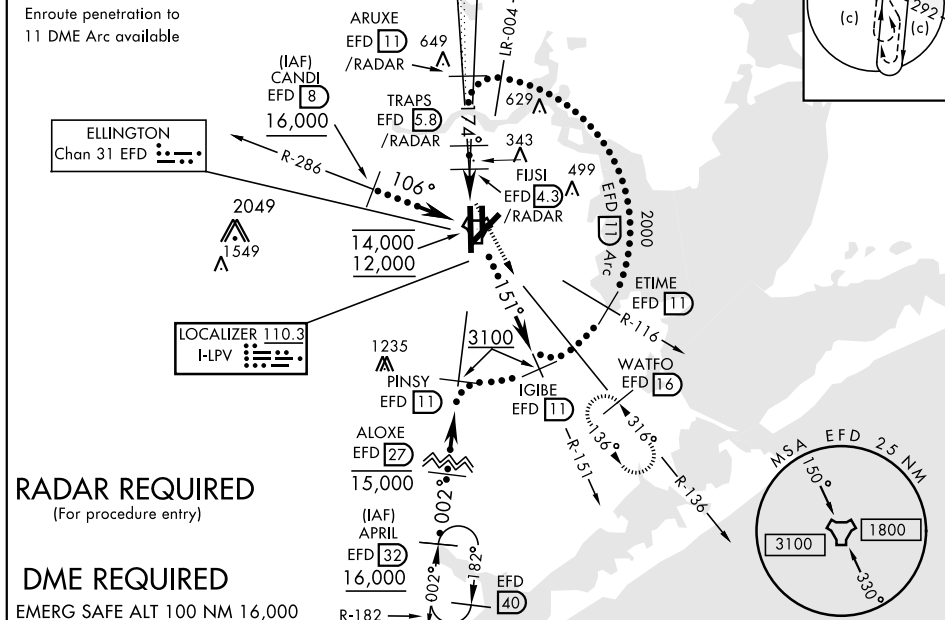
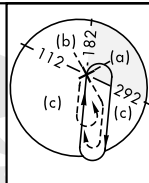


MISSED APPROACH: Climb to 700 then climbing left turn to 3100 on EFD TACAN R-136 to WATFO/EFD 16 DME and hold.

ATIS 135.575 269.9	HOUSTON APP CON 134.45 284.0	ELLINGTON TOWER 126.05 253.5	GND CON 121.6 275.8
------------------------------	--	--	-------------------------------

EFD TACAN	N29°36.36' W95°09.58'
CANDI	N29°39.24' W95°18.17'
APRIL	N29°04.53' W95°14.05'
WATFO	N29°23.90' W94°58.07'

Enroute penetration to
11 DME Arc available



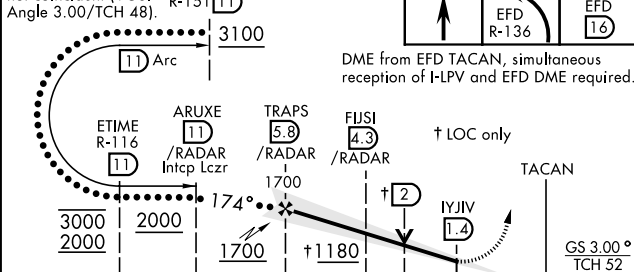
RADAR REQUIRED
(For procedure entry)

DME REQUIRED

EMERG SAFE ALT 100 NM 16,000

VGSI and ILS GP
not coincident (VGSI
Angle 3.00/TCH 48).

IGIBE
R-151 11



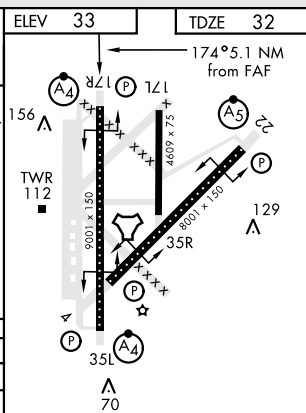
DME from EFD TACAN, simultaneous
reception of I-LPV and EFD DME required.

† LOC only

TACAN

GS 3.00°
TCH 52

CATEGORY	C	D	E
S-ILS 17R	232/40	200	(200-¾)
S-LOC 17R*	480/50	448	(500-1)
CIRCLING **	580-1½ 547 (600-1½)	640-2 607 (700-2)	700-2¼ 667 (700-2¼)



HIRL Rwy 4-22 and 17R-35L
TDZL/CL Rwy 17R, 22 and 35L

HI-ILS Y or LOC Y RWY 17R