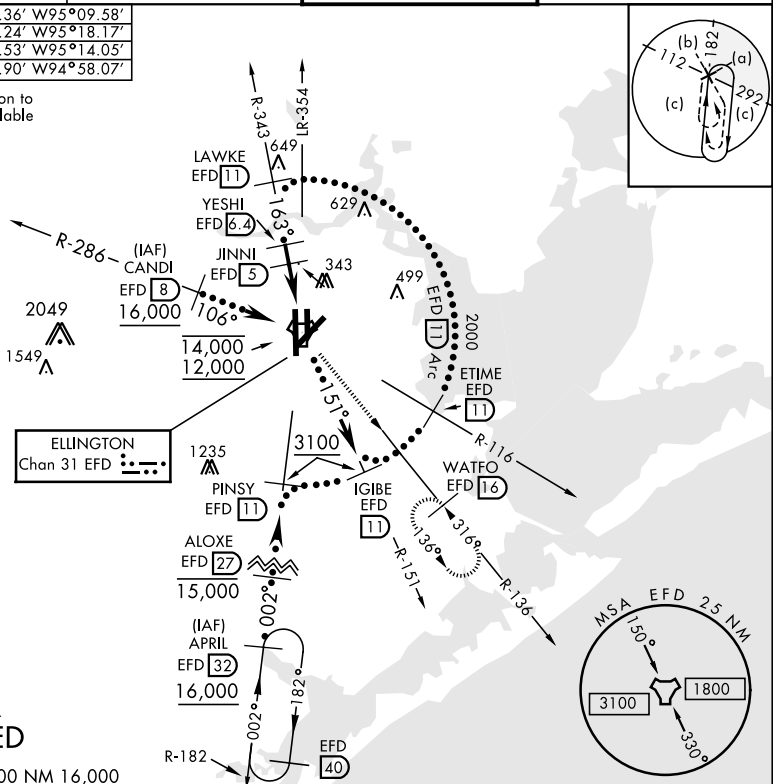


HI-TACAN RWY 17R

TACAN Chan 31	APCH CRS 163°	Rwy Idg THRE Arpt Elev 9001 31 33	JAL-197 [USAF]	HOUSTON/ELLINGTON (KEFD)
* When ALS inop, increase CAT CDE vis to 1½ miles. ** Circling not authorized W of Rwy 17R-35L.			MALSF 	MISSED APPROACH: Climbing left turn to 3100 on EFD TACAN R-136 to WATFO/EFD 16 DME and hold.
ATIS 135.575 269.9	HOUSTON APP CON 134.45 284.0	ELLINGTON TOWER 126.05 253.5	GND CON 121.6 275.8	

EFD TACAN	N29°36.36' W95°09.58'
CANDI	N29°39.24' W95°18.17'
APRIL	N29°04.53' W95°14.05'
WATFO	N29°23.90' W94°58.07'

Enroute penetration to
11 DME Arc available



**RADAR
REQUIRED**

EMERG SAFE ALT 100 NM 16,000

			3100 EFD R-136	WATFO EFD 16	ELEV 33	THRE 31
CATEGORY	C	D	E			
S-17R *	500/60	469	(500-1¼)			
CIRCLING **	500-1½ 467 (500-1½)	600-2 567 (600-2)	660-2¼ 627 (700-2¼)			

HI-TACAN RWY 17R