

LOC I-EDF	APP CRS	Rwy Idg	9001
111.1	354°	TDZE	28
		Apt Elev	33

ILS Z or LOC Z RWY 35L  
ELLINGTON (EFD)

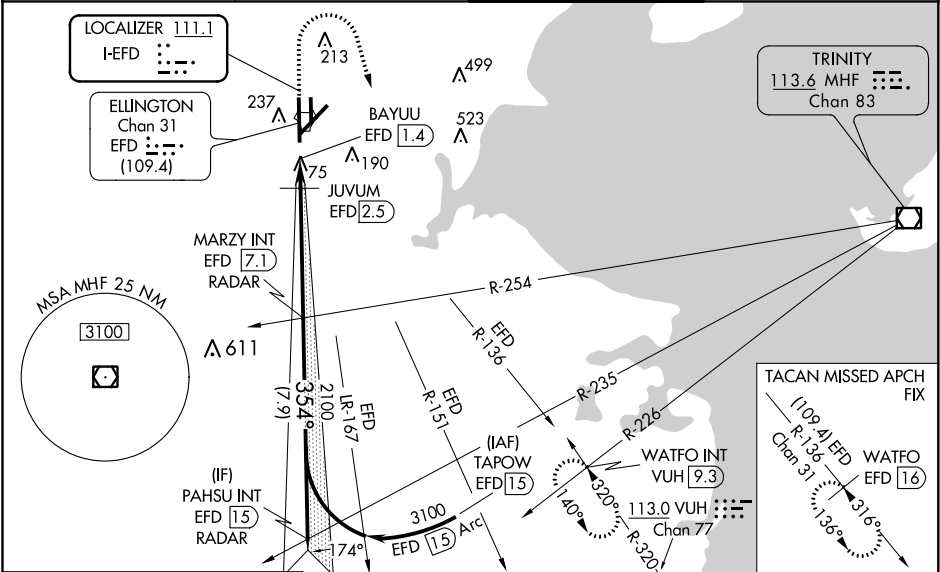
**RADAR required for procedure entry.**

**⚠** Circling NA west of Rwy 17R-35L. DME from EFD TACAN. Simultaneous reception of I-EDF and EFD DME required. Inop table does not apply to S-ILS 35L. For inop ALS, increase S-LOC 35L Cat C/D/E visibility to 1½ SM. For inop ALS when using JUVUM fix minimums, increase S-LOC 35L Cat C/D/E visibility to RVR 6000.

**MALSF**

**⚠** MISSED APPROACH: Climb to 700 then climbing right turn to 3100 on VUH VOR/DME R-320 to WATFO INT/VUH 9.3 DME and hold. (TACAN aircraft climb to 700 then climbing right turn to 3100 on EFD TACAN R-136 to WATFO/EFD 16 DME and hold southeast, left turn, 316° inbound).

ATIS 135.575 269.9	HOUSTON APP CON 134.45 284.0	ELLINGTON TOWER 126.05 253.5	GND CON 121.6 275.8
-----------------------	---------------------------------	---------------------------------	------------------------



ELEV 33	TDZE 28	VGSI and ILS glidepath not coincident (VGSI Angle 3.00/TCH 32).					
HIRL Rwys 4-22 and 17R-35L TDZ/CL Rwys 17R, 22 and 35L		PAHSU INT EFD 15 RADAR					
TWR 116		JUVUM EFD 2.5					
35L 354° 6.3 NM from FAF		BAYUU EFD 1.4					
FAF to MAP 5.7 NM		2100 354° 3100					
Knots 60 90 120 150 180		GS 3.00° TCH 54					
Min:Sec 5:42 3:48 2:51 2:17 1:54		0.6 NM 1.1 NM 4.6 NM 7.9 NM					
		CATEGORY	A	B	C	D	E
		S-ILS 35L	228/40 200 (200-¾)				
		S-LOC 35L	620/40	592 (600-¾)	620-1⅓	592 (600-1⅓)	
		CIRCLING	620-1	587 (600-1)	620-1¾ 587 (600-1¾)	640-2 607 (700-2)	700-2¼ 667 (700-2¼)
		JUVUM FIX MINIMUMS (DME REQUIRED)					
		S-LOC 35L	440/40	412 (500-¾)	440/50	412 (500-1)	
		CIRCLING	500-1	467 (500-1)	580-1½ 547 (600-1½)	640-2 607 (700-2)	700-2¼ 667 (700-2¼)

SC-5, 31 DEC 2020 to 28 JAN 2021

SC-5, 31 DEC 2020 to 28 JAN 2021