

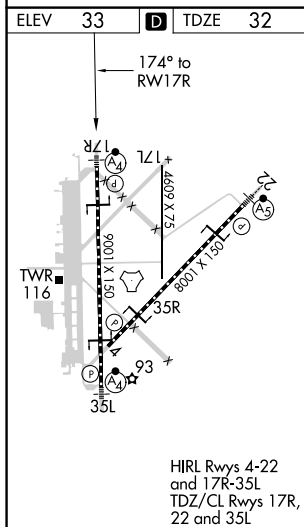
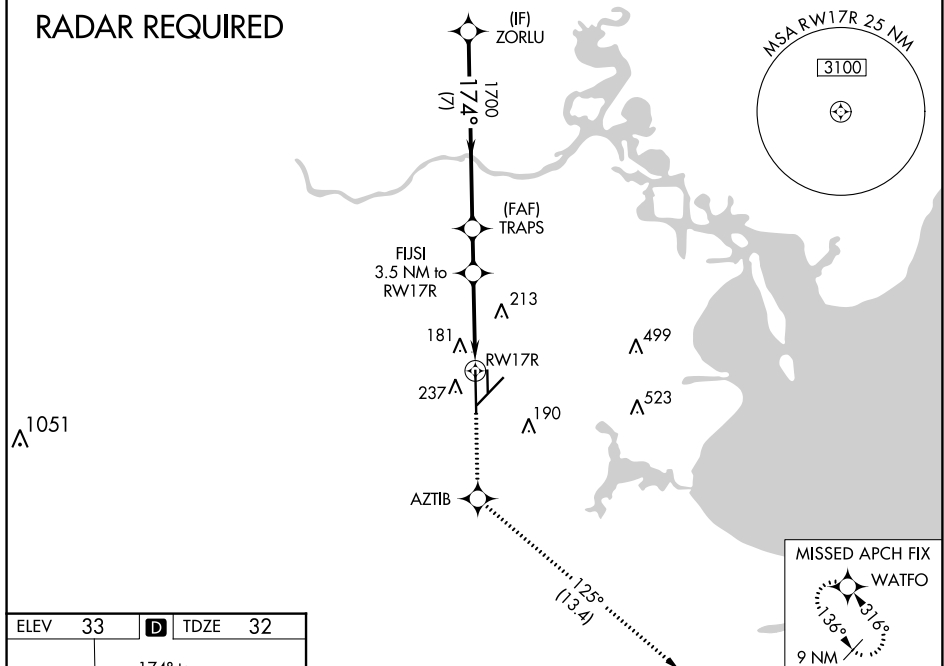
RNAV (GPS) RWY 17R
ELLINGTON (EFD)

MALSF

MISSED APPROACH: Climb to 3100 direct AZTIB and on track 125° to WATFO and hold.

ATIS 135.575 269.9	HOUSTON APP CON 134.45 284.0	ELLINGTON TOWER 126.05 253.5	GND CON 121.6 275.8
-----------------------	---------------------------------	---------------------------------	------------------------

RADAR REQUIRED



VGSI and RNAV glidepath not coincident (VGSI Angle 3.00/TCH 48).				<div>3100</div> <div>↑</div>		<div>AZTIB</div> <div>✦</div>		<div>tr 125°</div>		<div>WATFO</div> <div>✦</div>	
ZORLU				*LNAV only.							
<div>2000</div> <div>GP 3.00° TCH 52</div>				<div>TRAPS</div> <div>1700</div> <div>3.5 NM to RW17R</div> <div>*1.4 NM to RW17R</div> <div>*1180</div> <div>RW17R</div>							
<div>174°</div> <div>1700</div>				<div>7 NM</div> <div>1.6 NM</div> <div>2.2 NM</div> <div>1.4 NM</div>							
CATEGORY		A		B		C		D		E	
LPV DA				232/40		200 (200-¾)					
LNAV/ VNAV DA				363/40		331 (400-¾)					
LNAV MDA		500/40		468 (500-¾)		500/60		468 (500-1¼)			
CIRCLING		500-1		467 (500-1)		580-1½ 547 (600-1½)		640-2 607 (700-2)		700-2¼ 667 (700-2¼)	