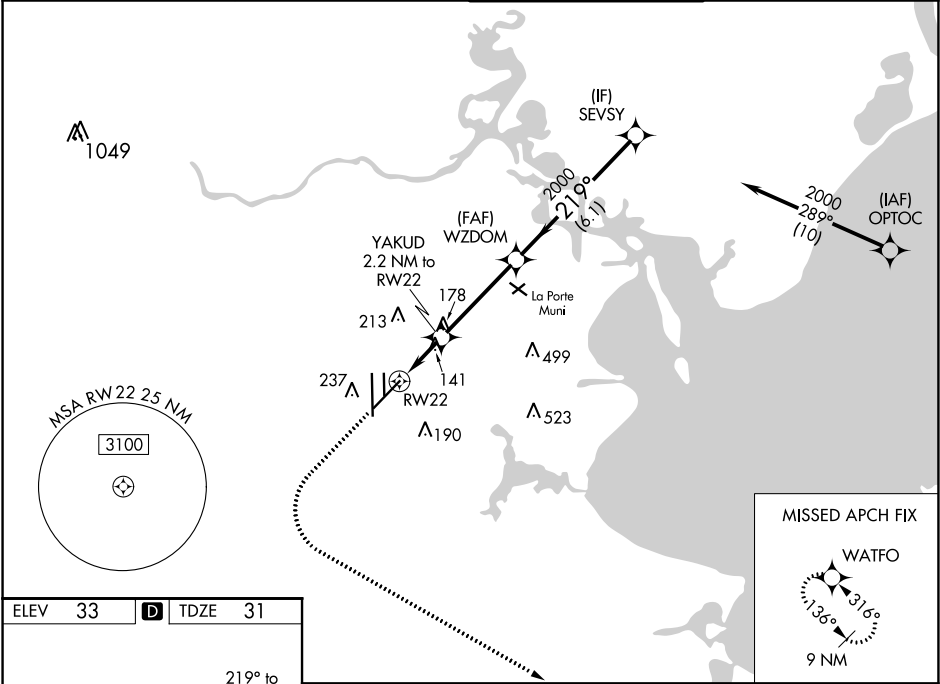


WAAS CH 61111 W22A	APP CRS 219°	Rwy Idg 8001 TDZE 31 Apt Elev 33
--	------------------------	---

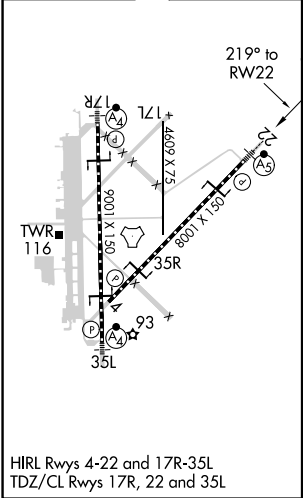
RNAV (GPS) RWY 22
ELLINGTON (EFD)




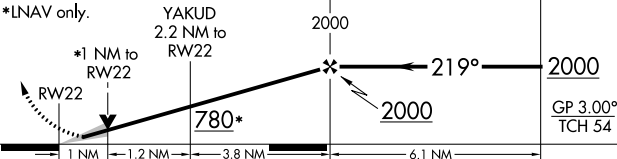

RNP APCH.	MALSR	MISSED APPROACH: Climb to 500 then climbing left turn to 3100 direct WATFO and hold.
<div><div></div><div></div></div> <div>Circling NA west of Rwy 17R - 35L. For uncompensated Baro-VNAV systems, LNAV/VNAV NA below -15°C or above 54°C. For inop ALS, increase LPV Cat E visibility to RVR 4000, LNAV/VNAV all Cats visibility to RVR 4500, and LNAV Cats C/D/E visibility to RVR 5500.</div>	<div><div></div><div></div></div>	

ATIS 135.575 269.9	HOUSTON APP CON 134.45 284.0	ELLINGTON TOWER 126.05 253.5	GND CON 121.6 275.8
------------------------------	--	--	-------------------------------



ELEV 33	D	TDZE 31
---------	----------	---------



500	3100	WATFO	VGSI and RNAV glidepath not coincident (VGSI Angle 3.00/TCH 50).		
					
*LNAV only.					
					
CATEGORY	A	B	C	D	E
LPV	DA	231/18	200 (200-½)		
LNAV/ VNAV	DA	341/24	310 (400-½)		
LNAV	MDA	400/24	369 (400-½)	400/35	369 (400-½)
 CIRCLING	500-1	467 (500-1)	580-1½ 547 (600-1½)	640-2 607 (700-2)	700-2¼ 667 (700-2¼)