

WAAS CH 97629 W35A	APP CRS 354°	Rwy Idg 9001 TDZE 28 Apt Elev 33
----------------------------------------	------------------------	-------------------------------------------------------------

RNAV (GPS) RWY 35L
ELLINGTON (EFD)

T For uncompensated Baro-VNAV systems, LNAV/VNAV NA below -15°C (5°F) or above 43°C (109°F). Circling NA west of Rwy 17R-35L. DME/DME RNP-0.3 NA.

A For inop MALSF, increase LNAV/VNAV all Cats visibility to 1½ mile, and LNAV Cats A and B visibility to 1 mile and Cats C, D and E visibility to 1½ mile. Inop table does not apply to LPV.

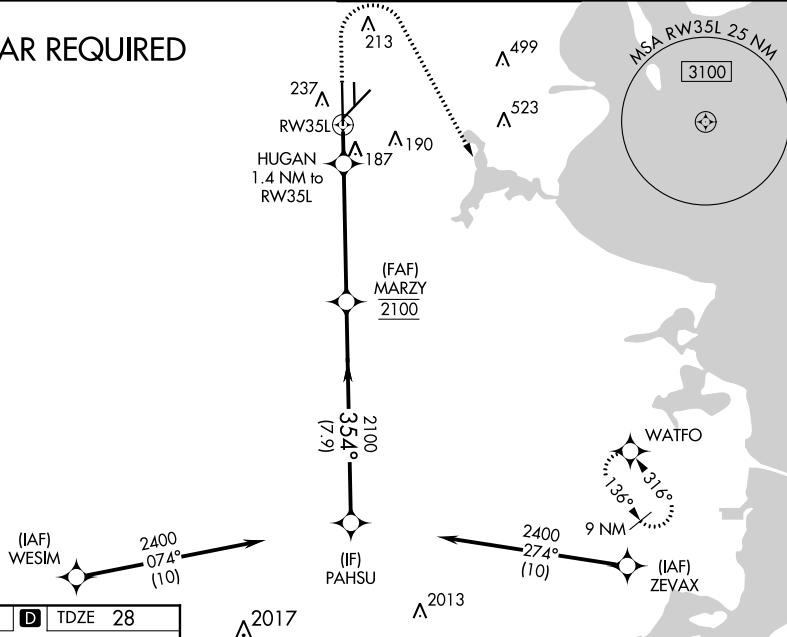
MALSF



MISSED APPROACH:
Climb to 1500 then
climbing right turn to
3100 direct WATFO
and hold.

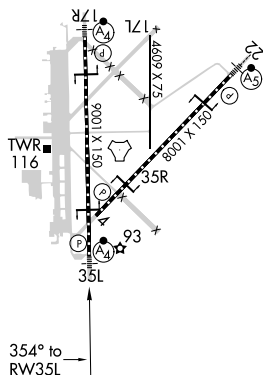
ATIS 135.575 269.9	HOUSTON APP CON 134.45 284.0	ELLINGTON TOWER 126.05 253.5	GND CON 121.6 275.8
-----------------------	---------------------------------	---------------------------------	------------------------

RADAR REQUIRED



ELEV 33	D	TDZE 28
---------	----------	---------

HIRL Rwy 4-22 and 17R-35L
TDZ/CL Rwy 17R, 22 and 35L



1500 3100 WATFO

*LNAV only.

HUGAN 1.4 NM to RW35L

MARZY 2100

PAHSU 2400

35°

520*

2100

GP 3.00° TCH 32

1.4 NM 4.9 NM 7.9 NM

CATEGORY	A	B	C	D	E
LPV DA		228/40	200 (200-¾)		
LNAV/VNAV DA		499/60	471 (500-1¼)		
LNAV MDA	440/40	412 (500-¾)	440/50	412 (500-1)	
CIRCLING	500-1	468 (500-1)	580-1½ 547 (600-1½)	640-2 607 (700-2)	700-2¼ 667 (700-2¼)