

TACAN EFD	APP CRS	Rwy Idg	8001
Chan 31	226°	TDZE	31
(109.4)		Apt Elev	33

TACAN RWY 22

ELLINGTON (EFD)

▼

NA

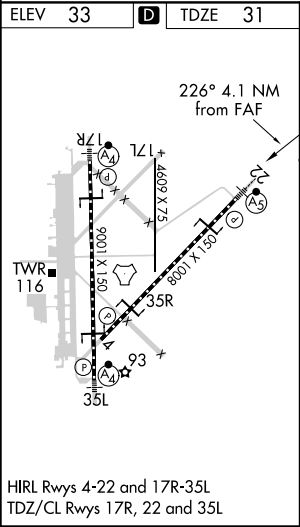
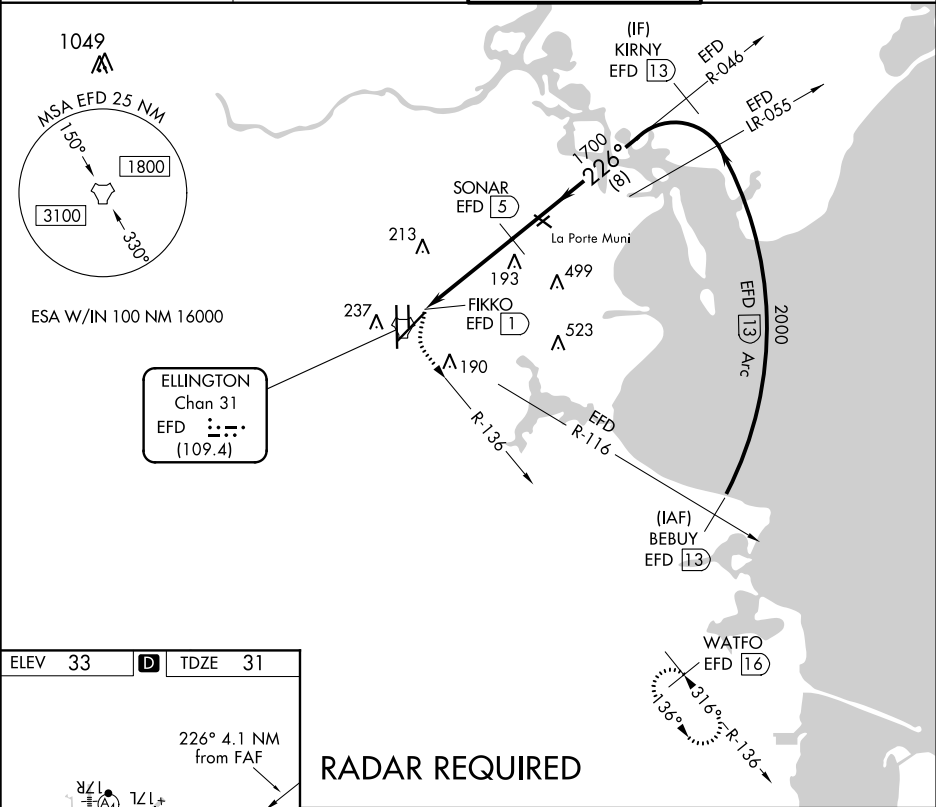
Circling NA west of Rwy 17R-35L. When ALS inop, increase S-22 Cat A/B visibility to RVR 5500 and Cat C/D/E to 1½ miles.

MALSR

AS

MISSED APPROACH: Climbing left turn to 3100 on EFD TACAN R-136 to WATFO/EFD 16 DME and hold.

ATIS	HOUSTON APP CON	ELLINGTON TOWER	GND CON
135.575 269.9	134.45 284.0	126.05 253.5	121.6 275.8



RADAR REQUIRED

3100 EFD R-136

WATFO EFD 16

VGSI and descent angles not coincident (VGSI Angle 3.00/TCH 50).

KIRNY EFD 13

Cat D/E VDA not for civil use.

SONAR EFD 5

226°

2000

1700

3.69° TCH 55

FIKKO EFD 1

EFD 2.2

0.2

1.2

2.7 NM

8 NM

CATEGORY	A	B	C	D	E
S-22	500/24	469 (500-½)	500/50	469 (500-1)	
C CIRCLING	500-1	467 (500-1)	580-1½ 547 (600-1½)	640-2 607 (700-2)	700-2¼ 667 (700-2¼)

SC-5, 31 DEC 2020 to 28 JAN 2021

SC-5, 31 DEC 2020 to 28 JAN 2021