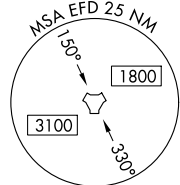


TACAN RWY 35L  
ELLINGTON (EFD)

Circling NA west of Rwy 17R-35L. When ALS inop, increase S-35L Cats A/B visibility to RVR 5500 and Cats C/D/E to 1 $\frac{3}{8}$  miles.

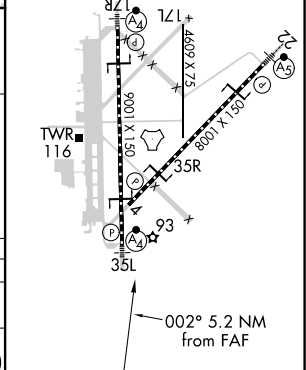
**MISSED APPROACH:** Climbing right turn to 3100 on EFD TACAN R-136 to WATFO/EFD 16 DME and hold.

## RADAR REQUIRED



ELEV	33	<b>D</b>	TDZE	28
------	----	----------	------	----

HIRL Rwy 4-22 and 17R-35L  
TDZ/CL Rwy 17R, 22 and 35L



SC-5, 31 DEC 2020 to 28 JAN 2021