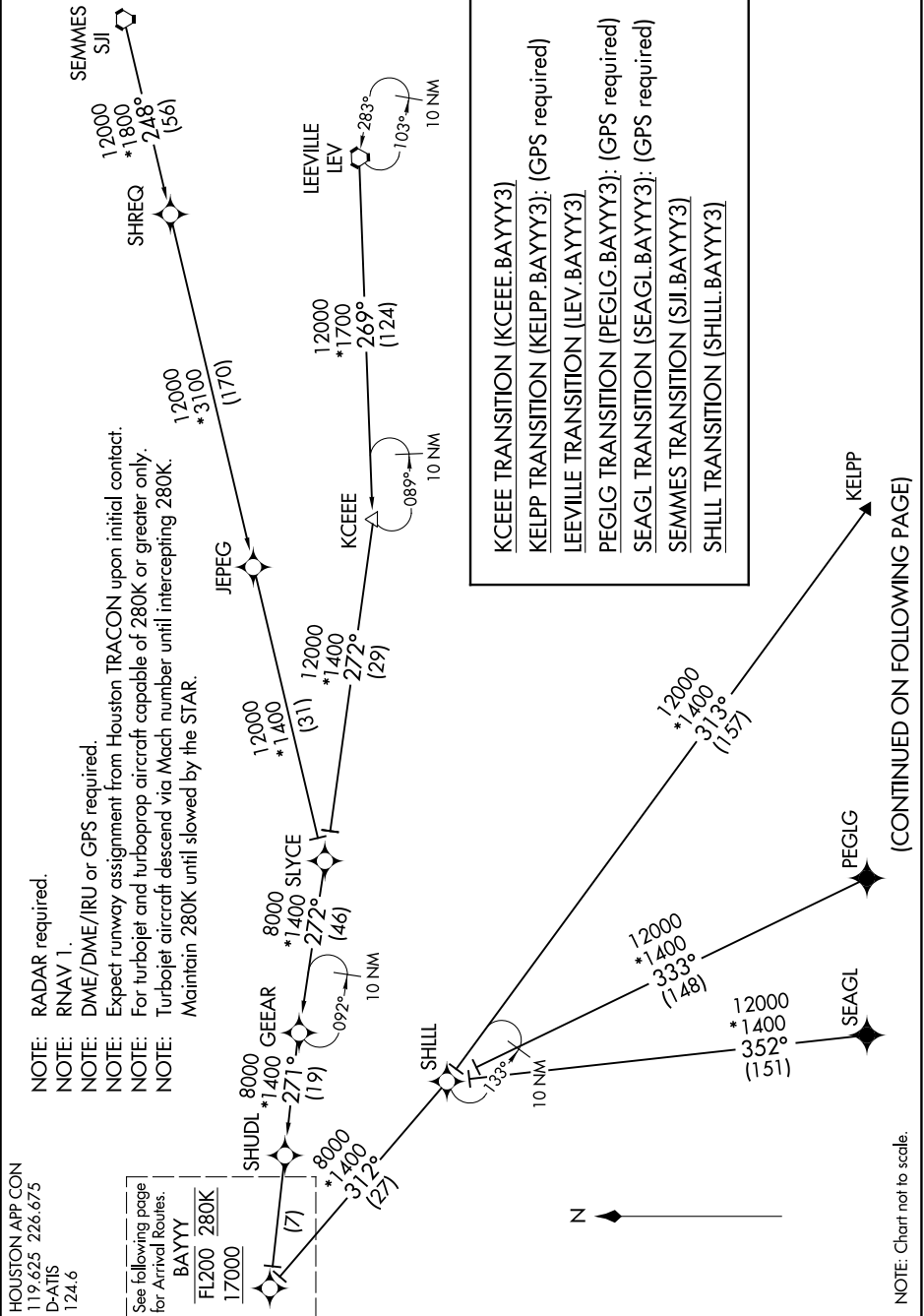


SC-5, 31 DEC 2020 to 28 JAN 2021

HOUSTON APP CON  
119.625 226.675  
D-ATIS  
124.6

See following page  
for Arrival Routes.  
BAYYY  
FL200 280K  
17000

- NOTE: RADAR required.
- NOTE: RNAV 1.
- NOTE: DME/DME/IRU or GPS required.
- NOTE: Expect runway assignment from Houston TRACON upon initial contact.
- NOTE: For turbojet and turboprop aircraft capable of 280K or greater only.
- NOTE: Turbojet aircraft descend via Mach number until intercepting 280K.
- NOTE: Maintain 280K until slowed by the STAR.



SC-5, 31 DEC 2020 to 28 JAN 2021