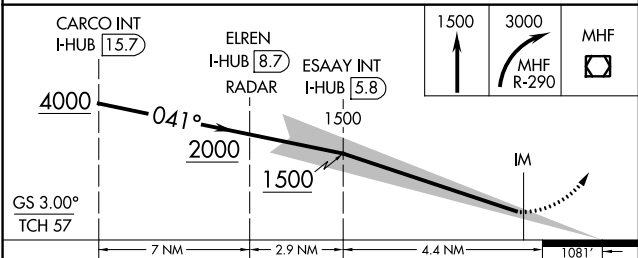
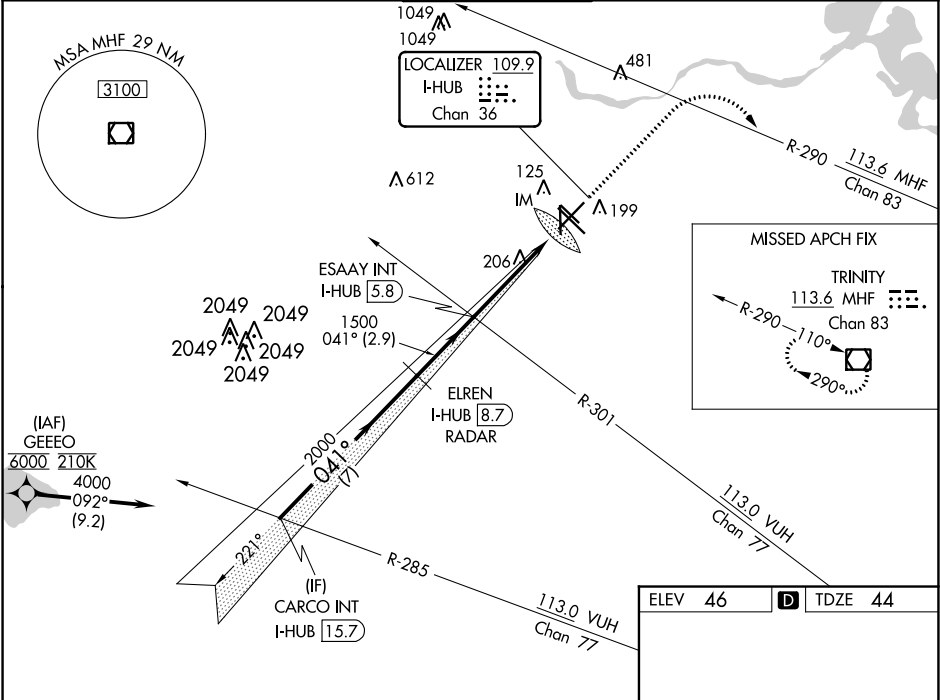


| | | | |
|---------------|---------|----------|------|
| LOC/DME I-HUB | APP CRS | Rwy Idg | 7602 |
| 109.9 | 041° | TDZE | 44 |
| Chan 36 | | Apt Elev | 46 |

ILS RWY 4 (SA CAT I)
WILLIAM P HOBBY (HOU)

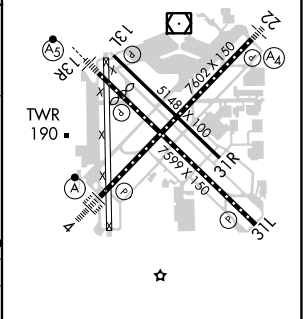
| | | |
|--|--------|---|
| Aircraft not GPS equipped - RADAR required for procedure entry. From GEEEO: RNAV 1- GPS required. | ALSF-2 | MISSED APPROACH: Climb to 1500 then climbing right turn to 3000 on MHF VOR/DME R-290 to MHF VOR/DME and hold. |
| Requires specific OPSPEC, MSPEC, or LOA approval and use of HUD to DH. | | |

| | | | | | |
|--------|---|-------------|---------|----------|-------|
| D-ATIS | HOUSTON APP CON | HOBBY TOWER | GND CON | CLNC DEL | CPDLC |
| 124.6 | 120.05 379.1 EAST 124.35 316.15 WEST | 118.7 256.9 | 121.9 | 125.45 | |



| | | | | |
|----------|----------------------|---|---|---|
| CATEGORY | A | B | C | D |
| S-ILS 4 | RA 146/14 150 DA 194 | | | |

SA CATEGORY I ILS - SPECIAL AIRCREW
& AIRCRAFT CERTIFICATION REQUIRED



REIL Rwy 31L and 35
MIRL Rwy 13L-31R and 17-35
HIRL Rwy 4-22 and 13R-31L
TDZ/CL Rwy 4, 13R and 31L