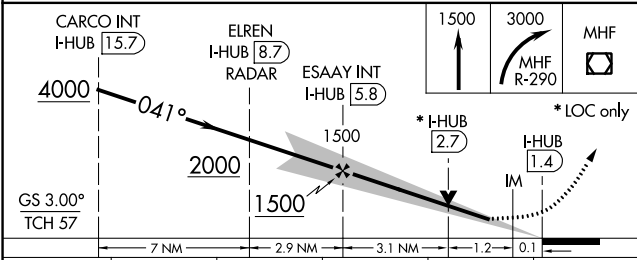
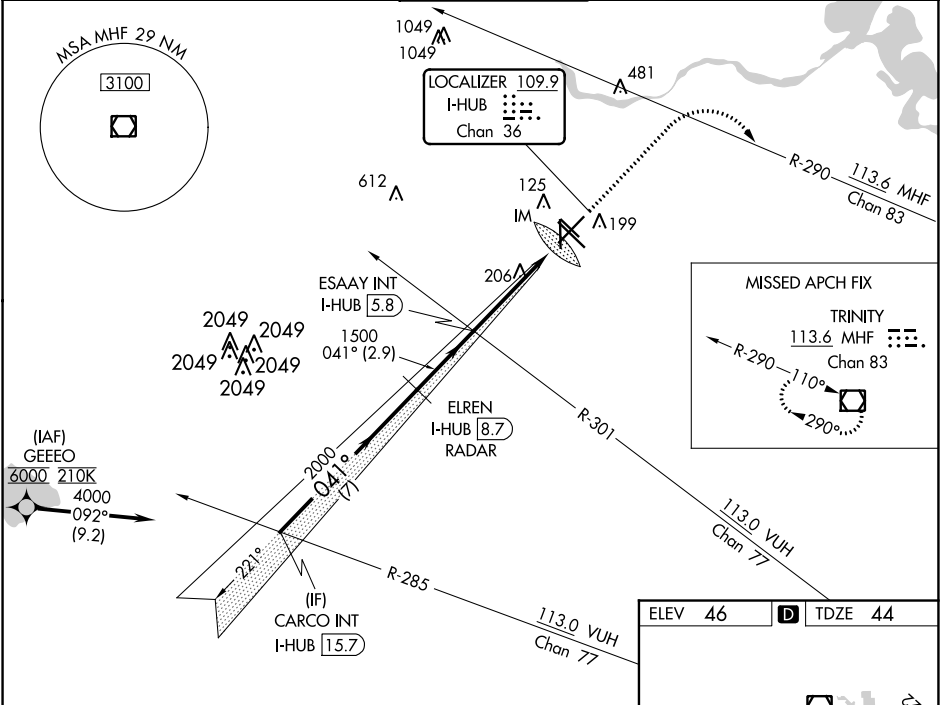


LOC/DME I-HUB	APP CRS	Rwy Idg	7602
109.9	041°	TDZE	44
Chan 36		Apt Elev	46

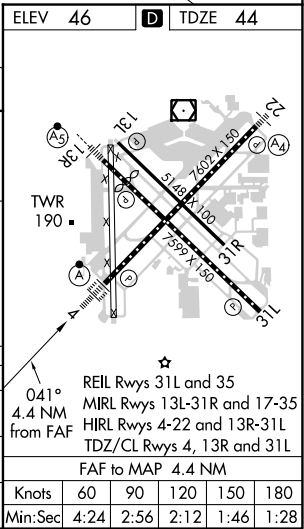
ILS or LOC RWY 4
WILLIAM P HOBBY (HOU)

Aircraft not GPS equipped - RADAR required for procedure entry. From GEEEO: RNAV 1- GPS required.	ALSF-2 A	MISSED APPROACH: Climb to 1500 then climbing right turn to 3000 on MHF VOR/DME R-290 to MHF VOR/DME and hold.
For inop ALSF-2, increase S-ILS 4 Cat E visibility to RVR 4000; S-LOC 4 Cat C/D/E visibility to 1½.		

D-ATIS	HOUSTON APP CON	HOBBY TOWER	GND CON	CLNC DEL	CPDLC
124.6	120.05 379.1 EAST 124.35 316.15 WEST	118.7 256.9	121.9	125.45	



CATEGORY	A	B	C	D	E
S-ILS 4	244/18 200 (200-½)				
S-LOC 4	520/24	476 (500-½)	520/50 476 (500-1)		
CIRCLING	520-1	474 (500-1)	740-2¼	694 (700-2¼)	860-3 814 (900-3)



SC-5, 31 DEC 2020 to 28 JAN 2021

SC-5, 31 DEC 2020 to 28 JAN 2021