

SC-5, 31 DEC 2020 to 28 JAN 2021

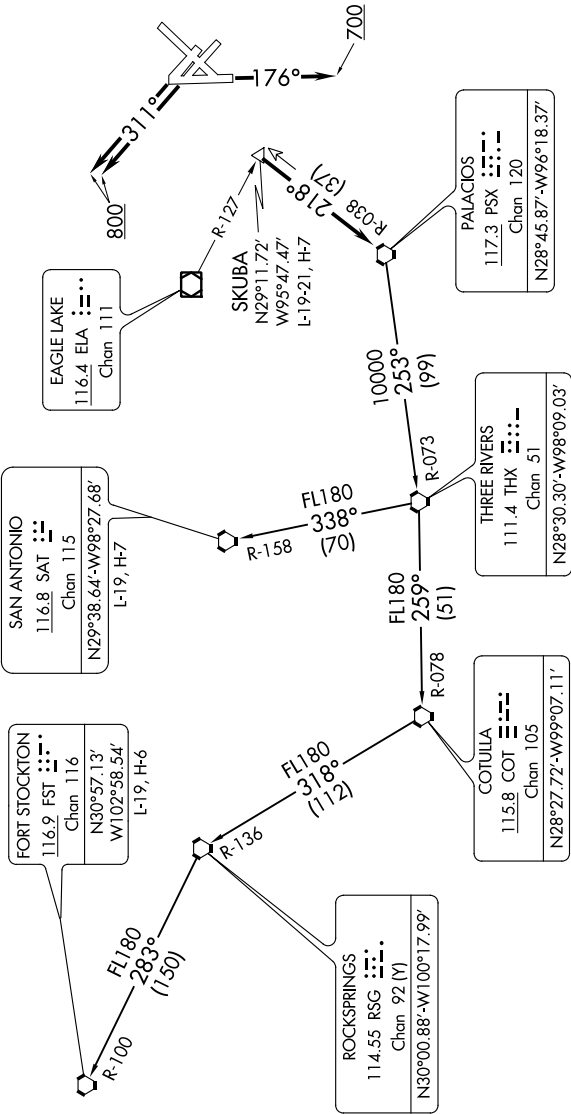
TOP ALTITUDE:
16000

TAKEOFF MINIMUMS

Rwys 13L/R, 31L/R, 35: Standard.
Rwy 4: 300-1 or standard with minimum
climb of 270' per NM to 300.
Rwy 17: 300-1.
Rwy 22: Standard with minimum climb
of 290' per NM to 1500.



DATIS
124.6
CLNC DEL
125.45
CPDLC
GND CON
121.9
HOBBY TOWER
118.7 256.9
HOUSTON DEP CON
127.125 269.075



(NARRATIVE ON FOLLOWING PAGE)

NOTE: RADAR required.
NOTE: Chart not to scale.

SC-5, 31 DEC 2020 to 28 JAN 2021